



New and Exciting tools in Air Quality Monitoring

Department of Environmental Quality



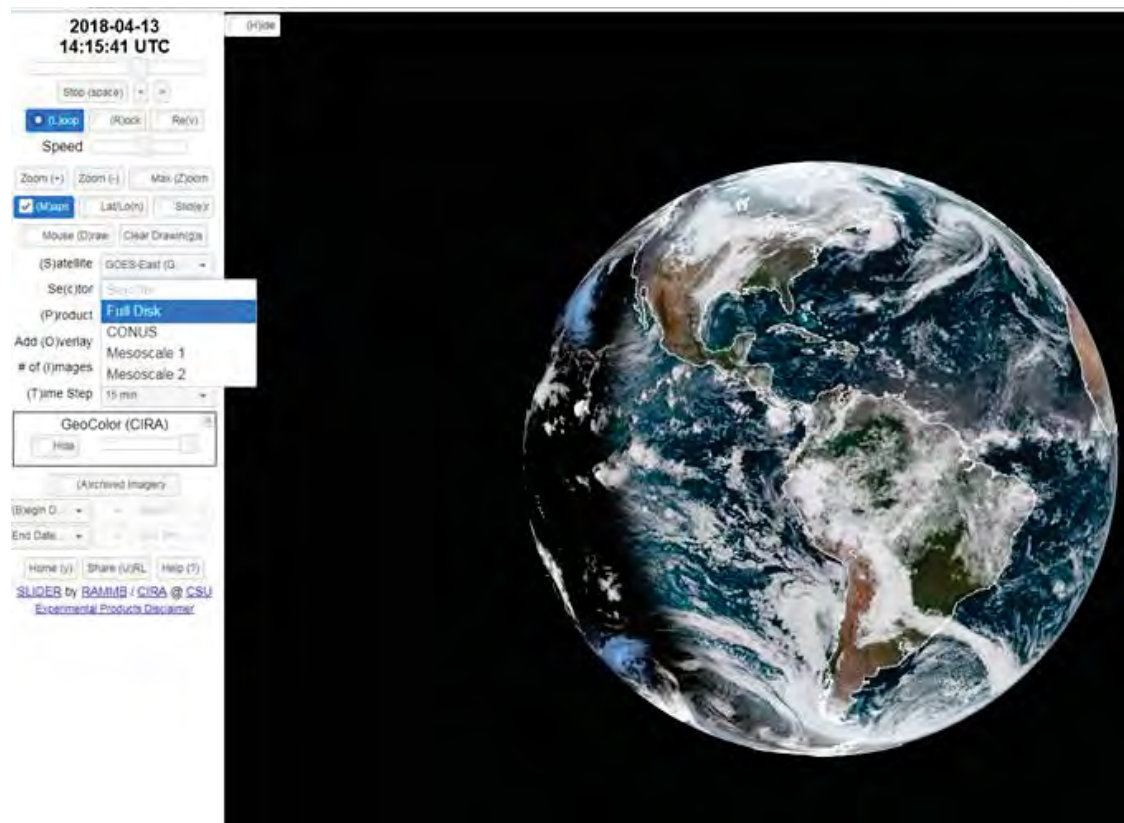
Links

- <http://rammb-slider.cira.colostate.edu>
- http://www2.ncair.org/airaware/forecast/DesignValues/predictor_NC.php



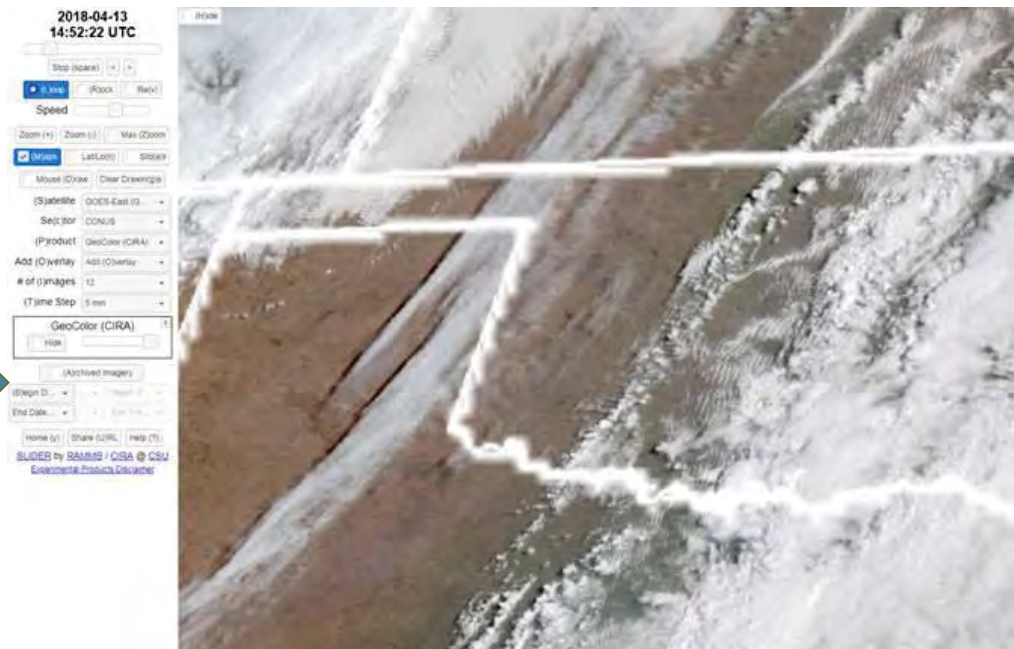
GOES 16

- When the page loads, locate the “sector” drop-down menu at left, click on it and select “CONUS”:



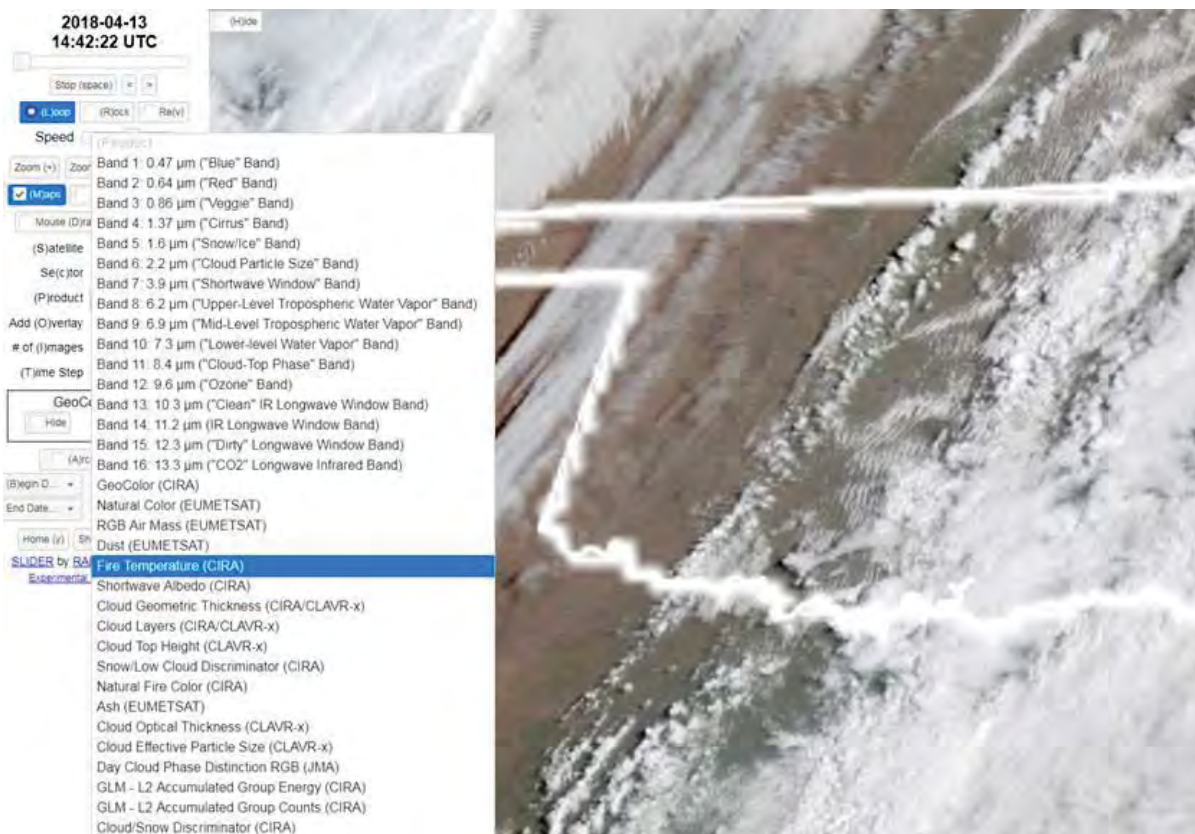
GOES 16

- Zoom in to the area of interest (in this case, we're going to look at Oklahoma where large grassfires are ongoing):



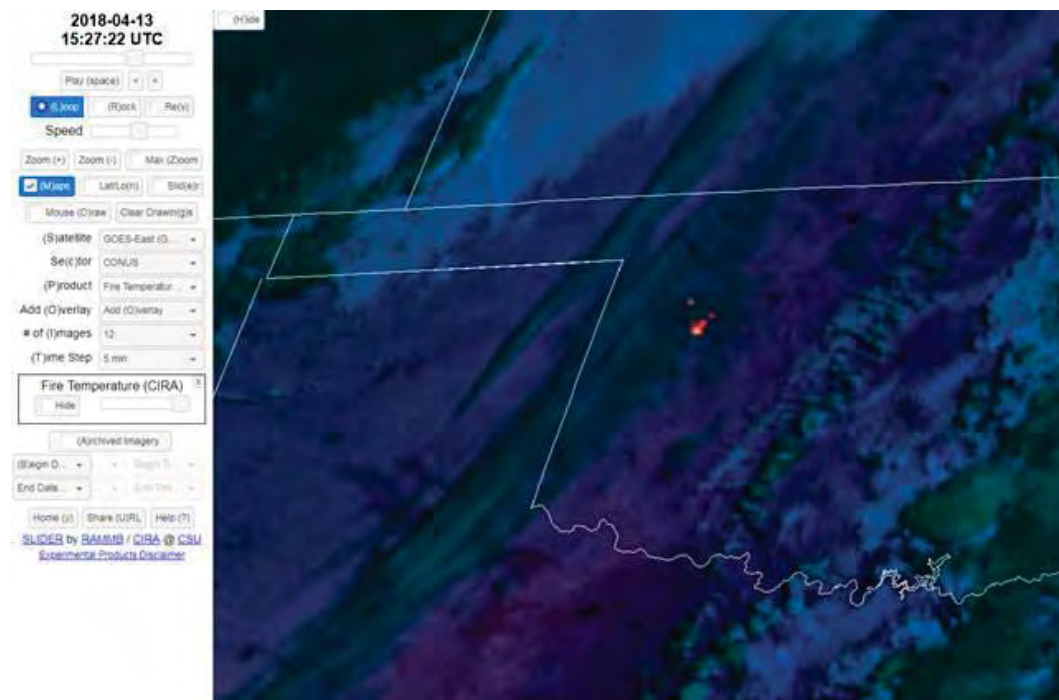
GOES 16

- In the Product drop-down menu, select “Fire Temperature”



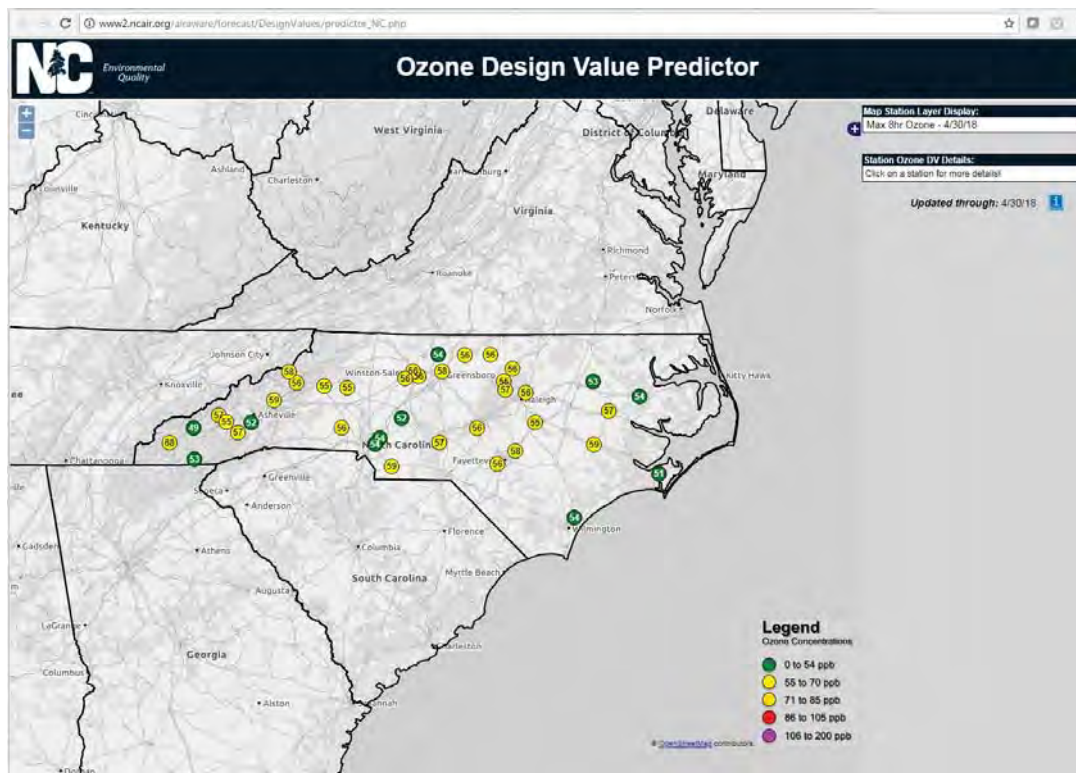
GOES 16

- Look for the bright orange and red dots as markers of where fires are.



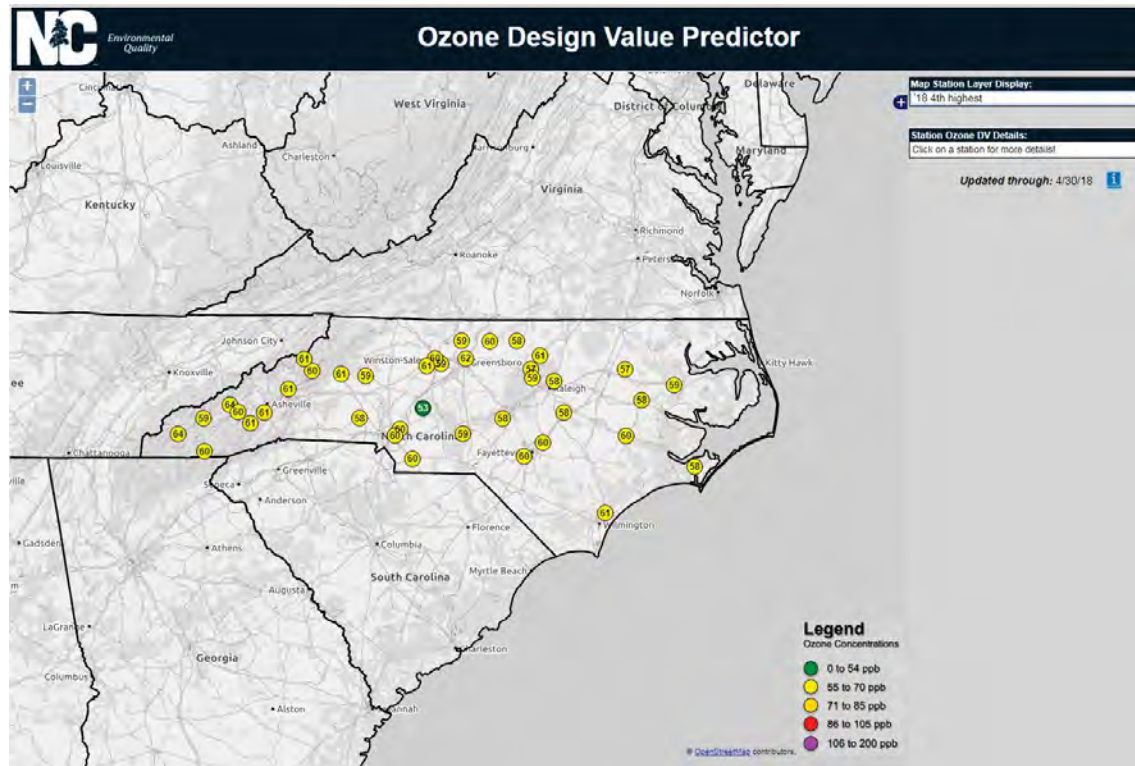
Ozone Design Value Page

- Ozone Design Value page advertises a number of ozone-related features.
 - Daily max. ozone values



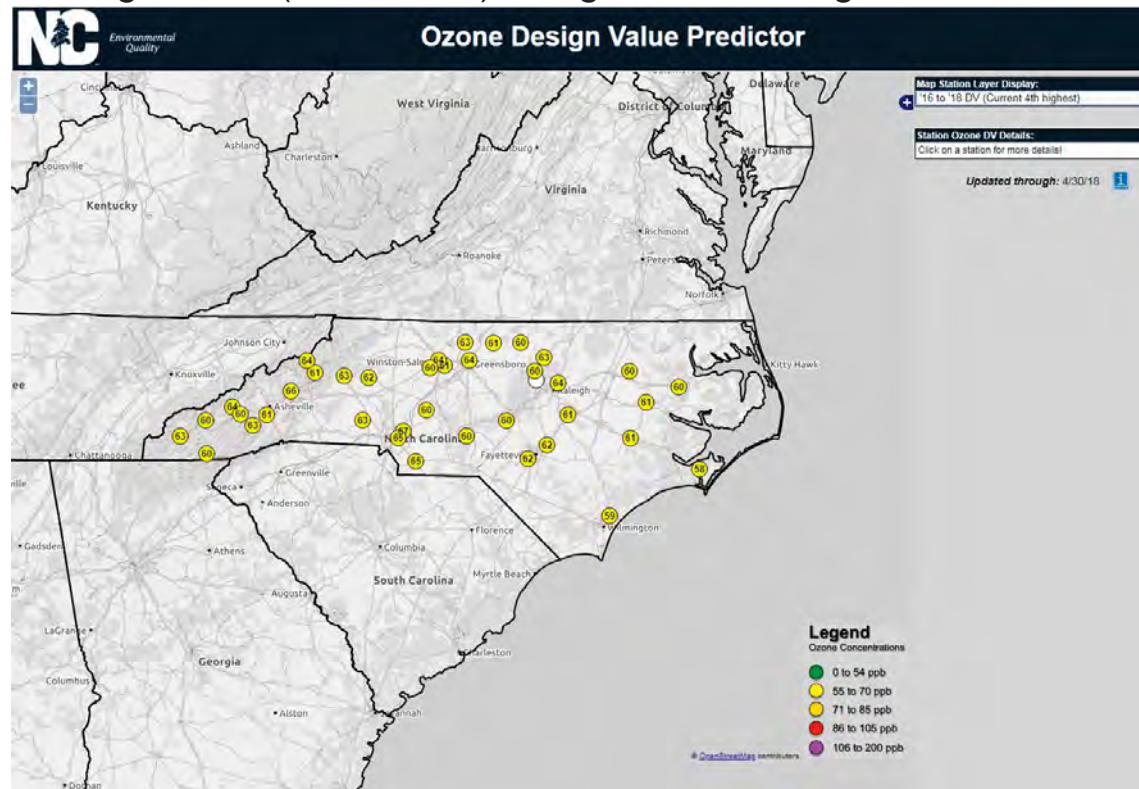
Ozone Design Value Page

- Ozone Design Value page advertises a number of ozone-related features.
 - Annual 4th-highest values



Ozone Design Value Page

- Ozone Design Value page advertises a number of ozone-related features.
 - Predicted Design Value (2016-2018) using current 4th-highest values



Ozone Design Value Page

- Ozone Design Value page advertises a number of ozone-related features.
 - Critical 4th-highest value for exceedance by monitor.

