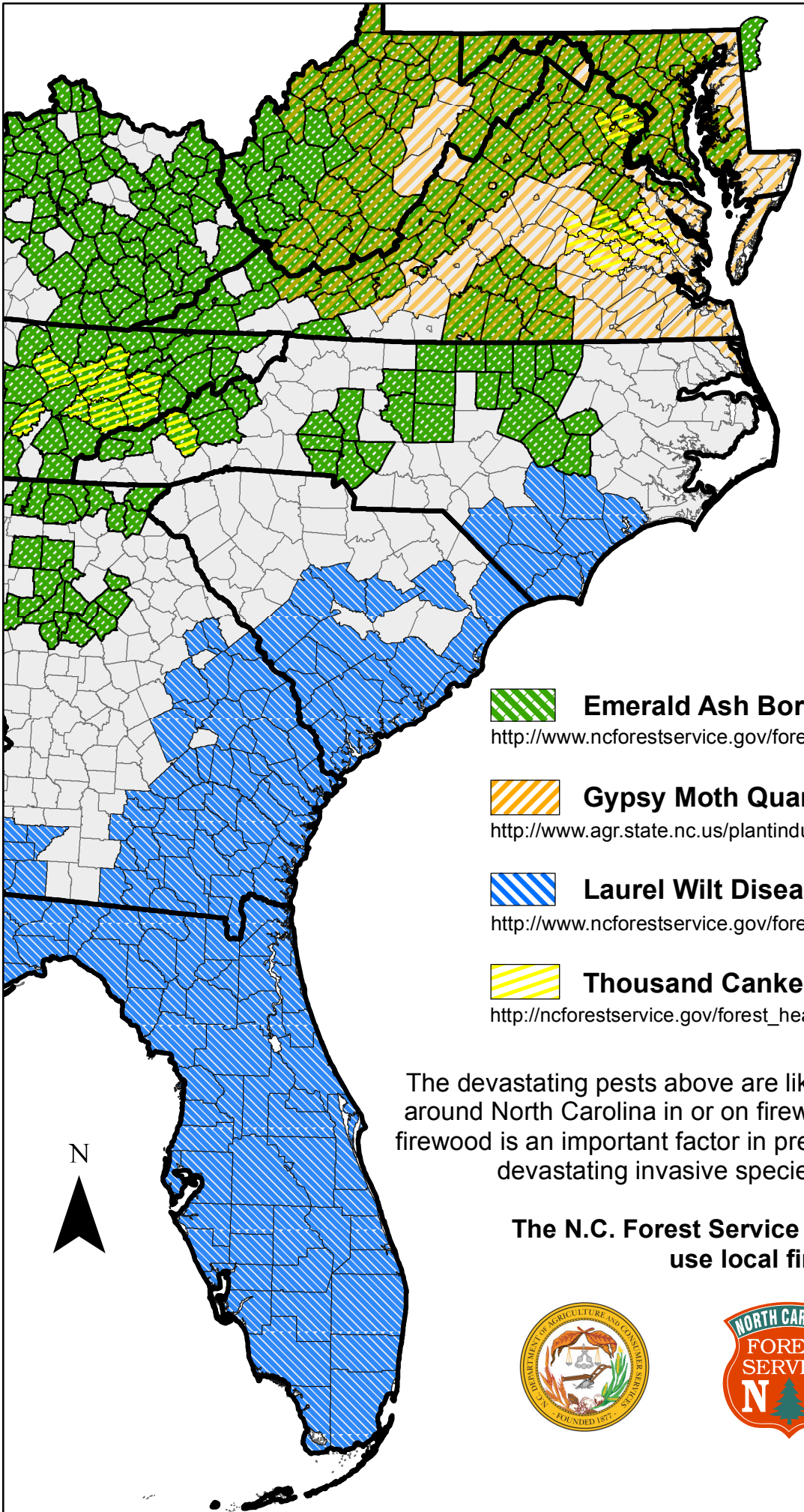


Where are they now?

Monitoring Firewood-Vectored Invasive Forest Pests in North Carolina



Emerald Ash Borer

http://www.ncforestservice.gov/forest_health/fh_eabfaq.htm



Gypsy Moth Quarantine

<http://www.agr.state.nc.us/plantindustry/plant/entomology/GM.htm>



Laurel Wilt Disease

http://www.ncforestservice.gov/forest_health/forest_health_laurelwiltfaq.htm



Thousand Cankers Disease

http://ncforestservice.gov/forest_health/forest_health_thousandcankers.htm

The devastating pests above are likely to be brought into or moved around North Carolina in or on firewood. The use of local or treated firewood is an important factor in preventing the spread of potentially devastating invasive species in our state's forests.

The N.C. Forest Service asks that you please use local firewood.



Map Created 7/12/2017
by Kelly Oten - FHM Coordinator