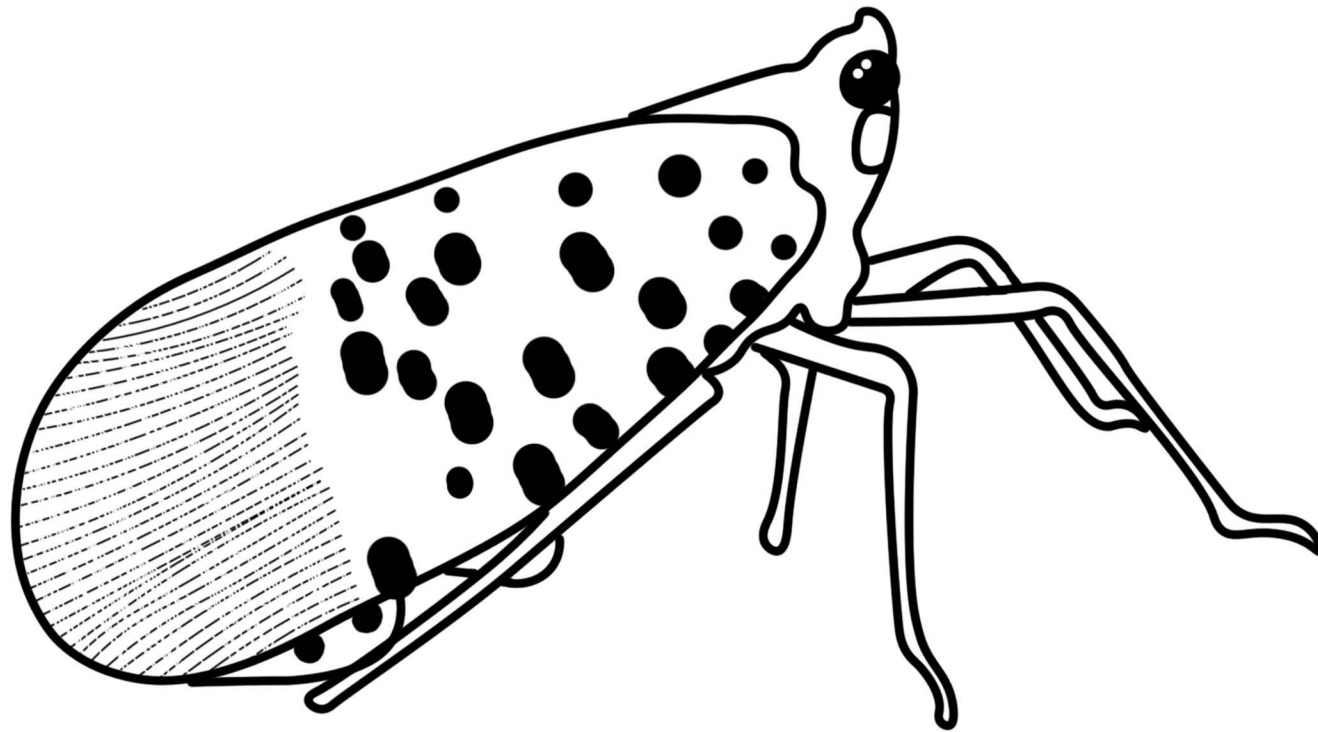


KEEPING NORTH CAROLINA'S FORESTS HEALTHY

Adult spotted lanternfly reach 1" long and ½" wide. Its wings are held folded tent-like over its body and are light brown-gray with black spots and black speckles at the tips. Their head and legs are black. If the forewings are pried up, bright red hindwings with black spots and black banded tips are visible. These hindwings are typically not visible when the spotted lanternfly is at rest. The body (abdomen) is typically concealed by the wings and is yellow on the outer edges with a broad black band down the center. In North Carolina, adults are expected from late summer through November.



www.ncforestservice.gov
(919) 857-4801



The North Carolina Forest Service is a division of the North Carolina Department of Agriculture and Consumer Services. Steve Troxler, Commissioner

