

Weekly Fire Danger Assessment NCFS - Region III

For Time Period:
Saturday (3/11/23) to Friday (3/17/23)

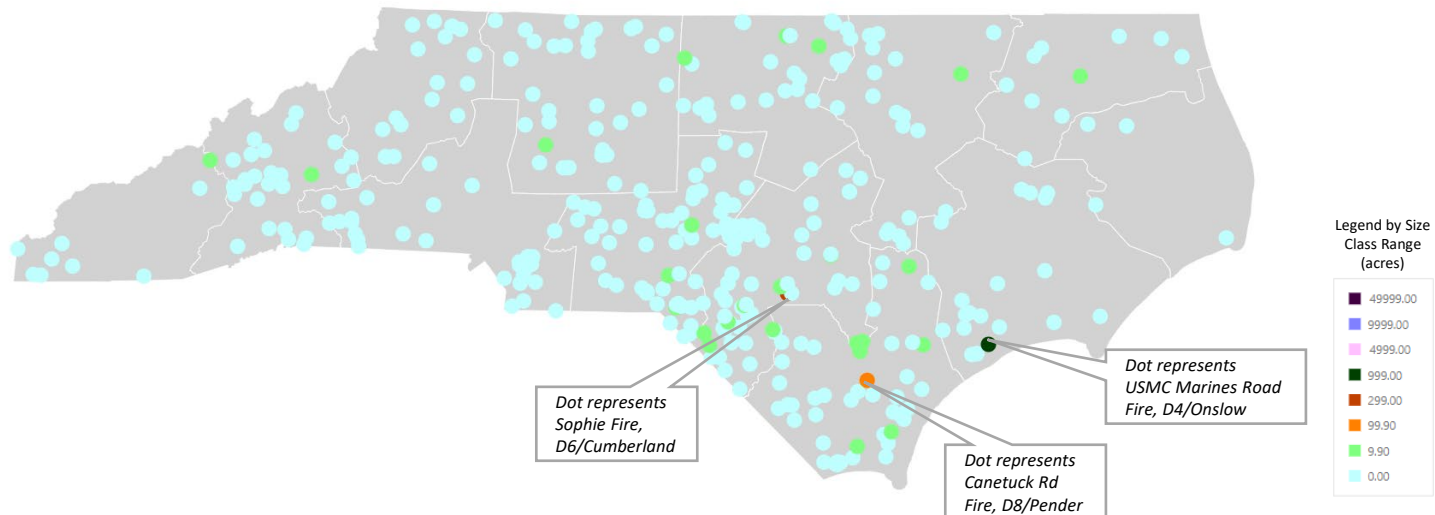
Past Week's Signal 14 Activity

NCFS - Region 3			
Previous 7-Day Fire Activity (Does Not Include Federal Ownerships)			
Data Source:	Signal 14 Regional Activity Summary Report (Signal 14 is a snapshot in time)		
Date Range:	3/3 - 3/9, 2023		
Type	Number	Acres	
Wildfires:	66	73.6	
Prescribed Fires:	9	378	

fiResponse Incident Location Map (for general context)

Date Range: 3/3 – 3/9, 2023

Report: Business Intelligence Module, Response Trends Map



Current and Forecasted Fire Danger Conditions by FDRA

R3

Regional Comments for this Week – R3

- Fires are burning in the surface fuels only.
- Nothing out of the ordinary for this time of the year

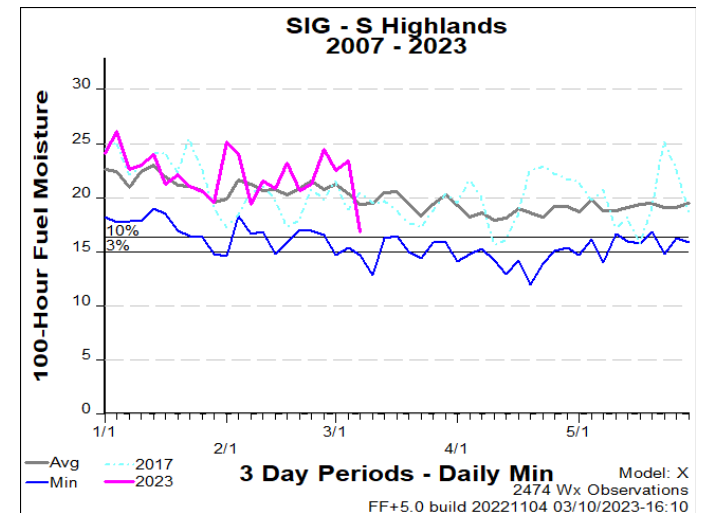
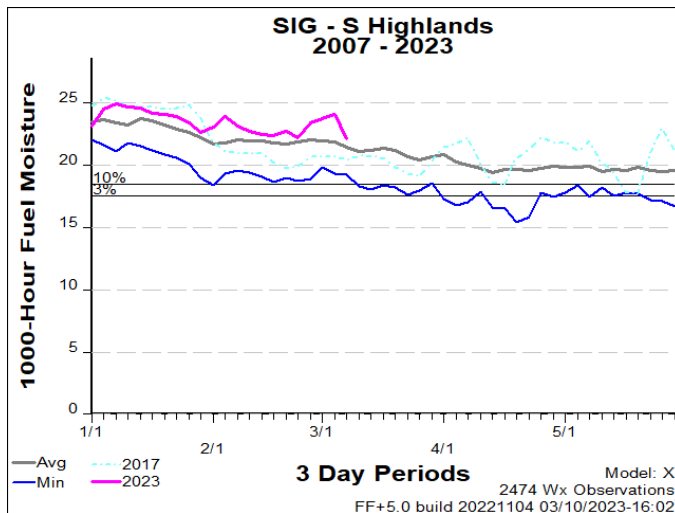
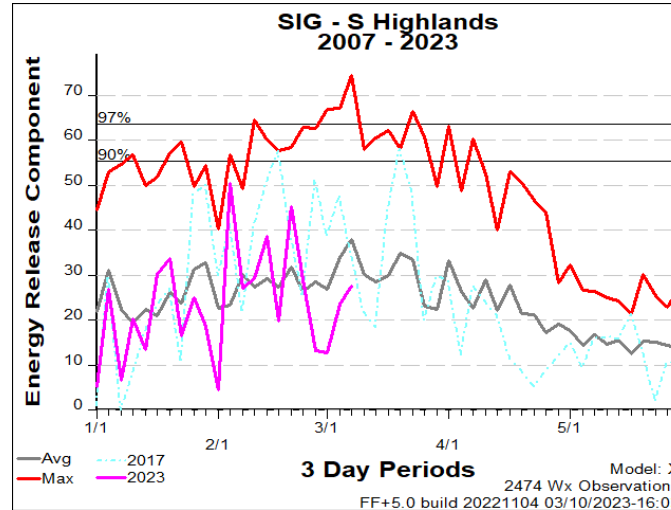
Important notes for next slide group:

A. Current ERC, 100-Hr & 1000-Hr values are extracts from FF+ using observation data downloaded from WIMS.

B. Weekly Outlook - FDRA General Fire Danger Forecast Matrix:

1. The matrix is an adaption of the existing Weekly NCFS Region-3 Fire Danger Assessment Matrix Process.
 - Matrix exposes existing available data in the same fashion, but on all 9 FDRAs.
 - Uses Fire Danger Adjective Rating Concept – Grouped into three bins (see notes on 3 & 4 below).
 - Weather variable ranges were defined by FDRA stakeholders and relate to Pocket Card notes.
 - **Is in development**, with goal being to have this as another tool on FWIP with daily automated updates.
2. The forecast matrix was created from standard NFDRS Forecast Outputs.
 - 7-Day Forecast Cycle from NWS using NFDRS Observations & Outputs generated from SIG Stations in FDRA
3. Fire Danger Forecast Indices/Component Values are grouped into three categories (All Days Filter):
 - Low to Moderate (0-74th Percentile); shown in Blue-Green
 - High (75th-89th Percentile) – shown in Yellow
 - VH to Extreme (90th+ Percentile) – shown in Red, called Critical
4. Dead Fuel Moisture Forecast Values are grouped into three categories (All Days Filter):
 - Low to Moderate (26th-100th Percentile); shown in Blue-Green
 - High (11th-25th Percentile); shown in Yellow
 - VH to Extreme (0-10th Percentile) – shown in Red, called Critical
5. Other Notes:
 - ****Read the Key and Notes associated with each FDRA (included with matrix image).****
 - Forecasts are variable and can change.
 - Is another tool for gaining better situational awareness by exposing the data in an easier to digest format.
 - Feedback is appreciated.

Region Specific – Southern Highlands



Weekly Outlook

Southern Highlands FDRA - General Fire Danger Forecast

For planning purposes only; forecast is subject to change

Four or more **RED** blocks in a day signals the potential for a **Critical Fire Day**

DAY	SAT 11-Mar	SUN 12-Mar	MON 13-Mar	TUE 14-Mar	WED 15-Mar	THU 16-Mar	FRI 17-Mar
Avg. Max. Temp. (°F)	53	47	47	42	51	60	57
Avg. Min. Humidity (%)	30	81	42	40	27	39	57
Avg. 20' Wind Speed (mph)	9	9	13	13	11	7	9
Avg. Wind Direction*	WNW	SE	NW	NW	NW	SW	SW
Avg. Probability of Precip. (%)	84	95	8	1	2	20	46
Days Since a Wetting Rain**	3.3	0.0	1.0				
Forecast ERC (Fuel Model X)	23.6	11.9	11.6	23.2	34.5	38.4	24.8
Forecast BI (Fuel Model X)	52.0	39.0	47.9	79.8	99.3	94.6	83.4
Forecast IC (Fuel Model X)	4.5	2.3	2.5	5.7	9.1	9.0	6.1
Forecast 100-Hr. FMC	18.1	18.5	19.5	19.7	19.7	18.8	18.1
Forecast 1000-Hr. FMC	25.2	25.0	24.9	24.8	24.7	24.6	24.5
KBDI	56.0						

Data Source:

- Weather forecasts come from the National Weather Service's [Digital Forecast Database](#). The wind speed and direction, and probability of precipitation, are calculated as averages of the 1 am, 7 am, 1 pm, and 7 pm forecasts. The 20-foot wind speed is estimated from the 10-meter forecast using the log wind profile method.
- Days since a wetting rain is calculated using a combination of historical data (to determine the most recent wetting rain event) and forecasted precipitation amounts. These forecasted amounts are only available for the first three days of the forecast period.
- Fire danger forecasts for the next 7 days are issued by National Weather Service through WIMS. KBDI is only available on the first forecast day since the [NFDRS Forecast](#) product does not include precipitation amounts, which are used to adjust KBDI from day to day

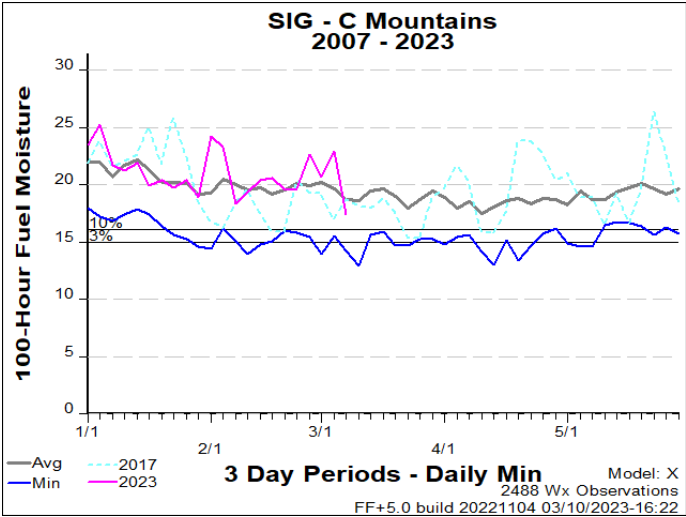
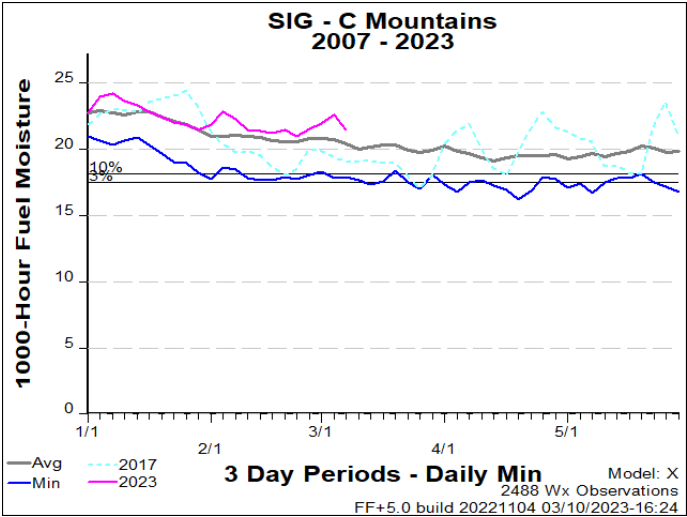
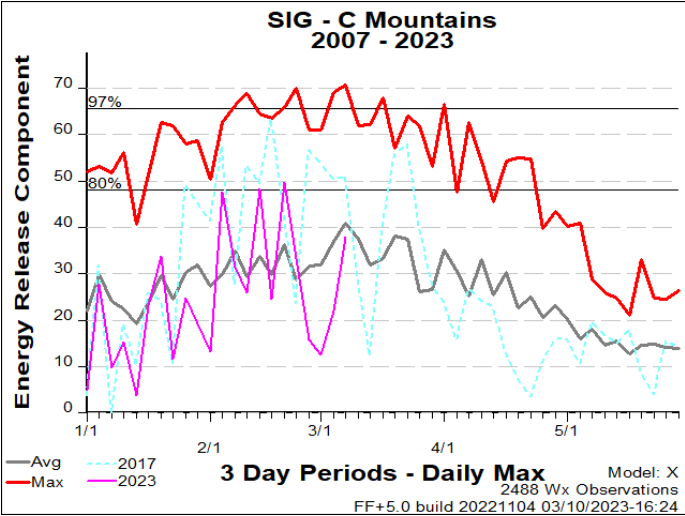
Values in the table above are averages from 3 stations in this FDRA:

- Tusquitee (315602)
- Locust Gap (315802)
- Highlands (315803)

KEY	Low to Moderate Burning Conditions	Burning Conditions Can be High CAUTION	Burning Conditions Can be Critical WATCH OUT!
Avg. Max. Temp.	Less than 50°F	Between 50°F and 55°F	Greater than 55°F
Avg. Min. Humidity	Greater than 35%	Between 30% and 35%	Less than 30%
Avg. 20' Wind Speed	Less than 5 mph	Between 5 mph and 7 mph	Greater than 7 mph
Avg. Wind Direction*	Criticality of wind direction is highly dependent on burn operations and/or structures threatened.		
Days Since a Wetting Rain**	A wetting rain is defined as 0.10" or greater. This is an average of the FDRA stations noted above.		
Energy Release Comp.	Less than 40	Between 40 and 52	Greater than 52
Burning Index	Less than 95	Between 95 and 118	Greater than 118
Ignition Component	Less than 9	Between 9 and 14	Greater than 14
100-Hour Fuel Moisture	Greater than 18%	Between 17% and 18%	Less than 17%
1000-Hour Fuel Moisture	Greater than 19%	Between 18% and 19%	Less than 18%
KBDI	Less than 345	Between 345 and 479	Greater than 479

Other factors to consider when determining fire danger: sky conditions, precipitation amount, number of days since rain, and season

Region Specific – Central Mountains



Weekly Outlook

Central Mountains FDRA - General Fire Danger Forecast

For planning purposes only; forecast is subject to change

Four or more RED blocks in a day signals the potential for a Critical Fire Day

DAY	SAT 11-Mar	SUN 12-Mar	MON 13-Mar	TUE 14-Mar	WED 15-Mar	THU 16-Mar	FRI 17-Mar
Avg. Max. Temp. (°F)	51	46	49	41	51	62	61
Avg. Min. Humidity (%)	31	76	42	37	26	32	50
Avg. 20' Wind Speed (mph)	11	10	14	16	14	7	9
Avg. Wind Direction*	NW	SSE	NW	NW	NW	WSW	SW
Avg. Probability of Precip. (%)	77	97	14	1	1	21	43
Days Since a Wetting Rain**	5.7	0.0	1.0				
Forecast ERC (Fuel Model X)	24.5	12.4	10.4	22.4	33.7	41.1	32.6
Forecast BI (Fuel Model X)	65.6	41.3	46.0	78.3	109.9	96.7	102.5
Forecast IC (Fuel Model X)	5.2	2.1	2.1	5.5	9.8	9.6	8.5
Forecast 100-Hr. FMC	17.6	17.8	18.1	18.6	18.9	18.1	17.2
Forecast 1000-Hr. FMC	23.6	23.5	23.4	23.3	23.2	23.1	22.9
KBDI	46.0						

Data Source:

- Weather forecasts come from the National Weather Service's [Digital Forecast Database](#). The wind speed and direction, and probability of precipitation, are calculated as averages of the 1 am, 7 am, 1 pm, and 7 pm forecasts. The 20-foot wind speed is estimated from the 10-meter forecast using the log wind profile method.
- Days since a wetting rain is calculated using a combination of historical data (to determine the most recent wetting rain event) and forecasted precipitation amounts. These forecasted amounts are only available for the first three days of the forecast period.
- Fire danger forecasts for the next 7 days are issued by National Weather Service through WIMS. KBDI is only available on the first forecast day since the [NFDRS Forecast](#) product does not include precipitation amounts, which are used to adjust KBDI from day to day

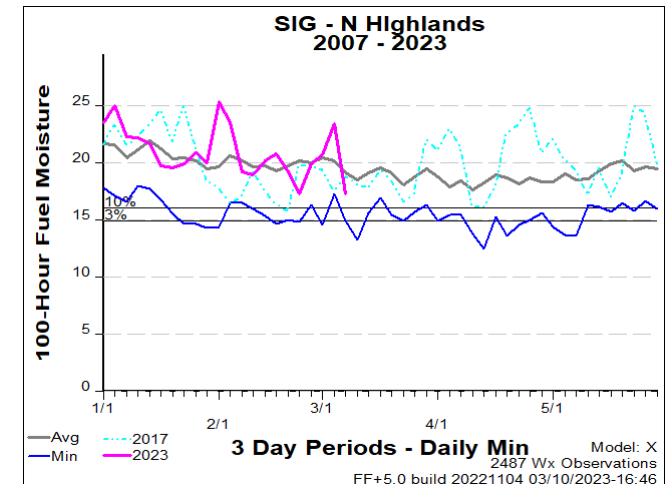
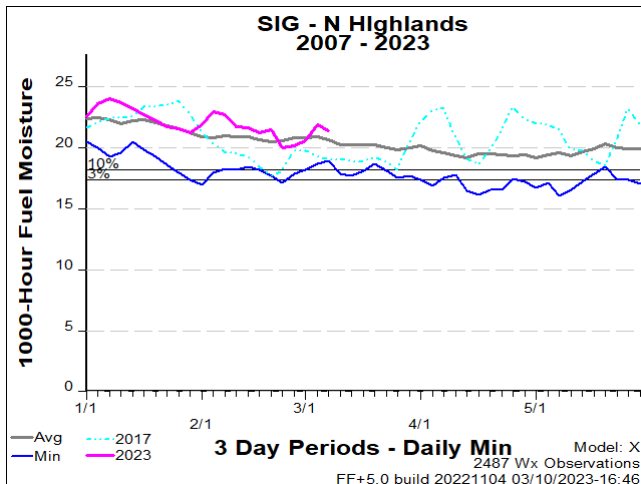
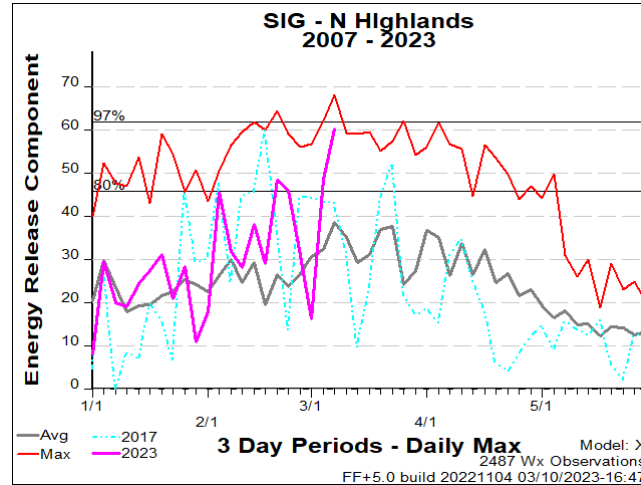
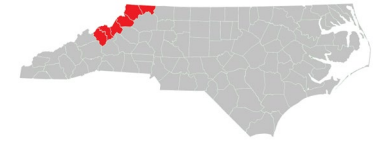
Values in the table above are averages from 3 stations in this FDRA:

- 7 Mile Ridge (313302)
- Davidson River (316001)
- Mtn Horticultural Crops Res Stn (316141)

KEY	Low to Moderate Burning Conditions	Burning Conditions Can be High CAUTION	Burning Conditions Can be Critical WATCH OUT!
Avg. Max. Temp.	Less than 50°F	Between 50°F and 60°F	Greater than 60°F
Avg. Min. Humidity	Greater than 35%	Between 30% and 35%	Less than 30%
Avg. 20' Wind Speed	Less than 5 mph	Between 5 mph and 10 mph	Greater than 10 mph
Avg. Wind Direction*	Criticality of wind direction is highly dependent on burn operations and/or structures threatened.		
Days Since a Wetting Rain**	A wetting rain is defined as 0.10" or greater. This is an average of the FDRA stations noted above.		
Energy Release Comp.	Less than 33	Between 33 and 50	Greater than 50
Burning Index	Less than 78	Between 78 and 106	Greater than 106
Ignition Component	Less than 6	Between 6 and 11	Greater than 11
100-Hour Fuel Moisture	Greater than 19%	Between 17% and 19%	Less than 17%
1000-Hour Fuel Moisture	Greater than 20%	Between 19% and 20%	Less than 19%
KBDI	Less than 319	Between 319 and 417	Greater than 417

Other factors to consider when determining fire danger: sky conditions, precipitation amount, number of days since rain, and season

Region Specific – Northern Highlands



Weekly Outlook

Northern Highlands FDRA - General Fire Danger Forecast

For planning purposes only; forecast is subject to change

Four or more **RED** blocks in a day signals the potential for a **Critical Fire Day**

DAY	SAT 11-Mar	SUN 12-Mar	MON 13-Mar	TUE 14-Mar	WED 15-Mar	THU 16-Mar	FRI 17-Mar
Avg. Max. Temp. (°F)	43	37	42	34	44	55	56
Avg. Min. Humidity (%)	39	83	48	42	29	31	49
Avg. 20' Wind Speed (mph)	15	10	16	19	17	9	10
Avg. Wind Direction*	NW	SSE	NW	NW	NW	W	WSW
Avg. Probability of Precip. (%)	55	95	17	0	3	19	40
Days Since a Wetting Rain**	1.0	0.0	1.0				
Forecast ERC (Fuel Model X)	26.0	14.2	10.5	29.6	39.3	46.0	38.0
Forecast BI (Fuel Model X)	86.2	50.6	51.7	122.9	132.7	106.6	107.1
Forecast IC (Fuel Model X)	5.2	2.1	2.4	6.8	10.0	10.7	8.8
Forecast 100-Hr. FMC	18.0	18.1	18.3	18.4	18.6	18.0	17.1
Forecast 1000-Hr. FMC	22.7	22.7	22.6	22.6	22.5	22.4	22.4
KBDI	33.5						

Data Source:

- Weather forecasts come from the National Weather Service's [Digital Forecast Database](#). The wind speed and direction, and probability of precipitation, are calculated as averages of the 1 am, 7 am, 1 pm, and 7 pm forecasts. The 20-foot wind speed is estimated from the 10-meter forecast using the log wind profile method.
- Days since a wetting rain is calculated using a combination of historical data (to determine the most recent wetting rain event) and forecasted precipitation amounts. These forecasted amounts are only available for the first three days of the forecast period.
- Fire danger forecasts for the next 7 days are issued by National Weather Service through WIMS. KBDI is only available on the first forecast day since the [NFDRS Forecast](#) product does not include precipitation amounts, which are used to adjust KBDI from day to day

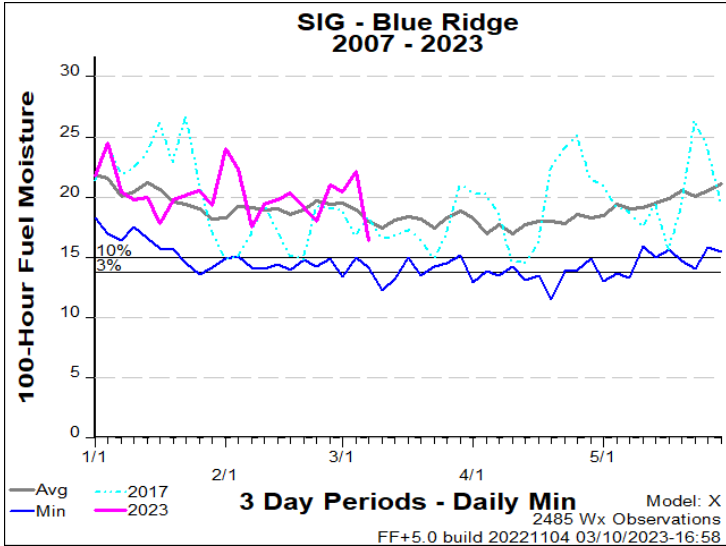
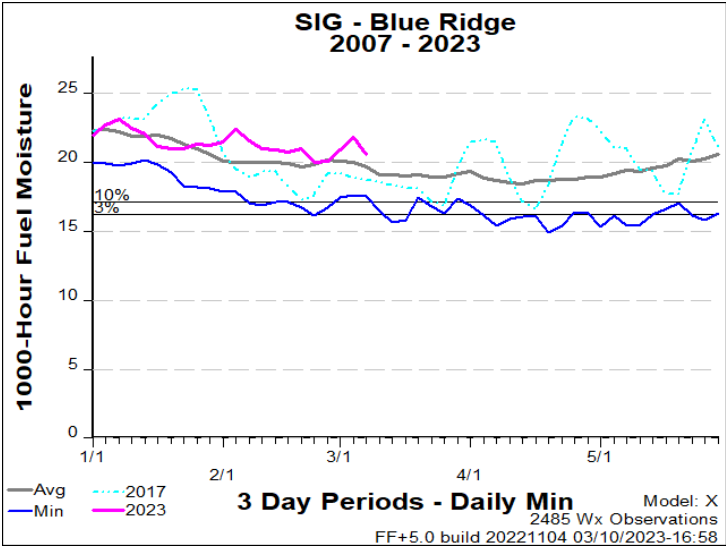
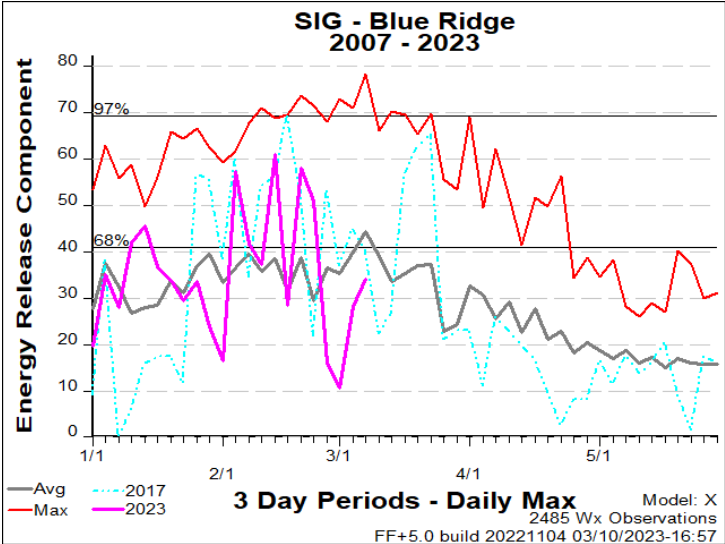
Values in the table above are averages from 3 stations in this FDRA:

- Laurel Springs (310101)
- Upper Mountain Research Stn (310141)
- Busick (313402)

KEY	Low to Moderate Burning Conditions	Burning Conditions Can be High CAUTION	Burning Conditions Can be Critical WATCH OUT!
Avg. Max. Temp.	Less than 50°F	Between 50°F and 58°F	Greater than 58°F
Avg. Min. Humidity	Greater than 35%	Between 30% and 35%	Less than 30%
Avg. 20' Wind Speed	Less than 2 mph	Between 2 mph and 5 mph	Greater than 5 mph
Avg. Wind Direction*	Criticality of wind direction is highly dependent on burn operations and/or structures threatened.		
Days Since a Wetting Rain**	A wetting rain is defined as 0.10" or greater. This is an average of the FDRA stations noted above.		
Energy Release Comp.	Less than 26	Between 26 and 46	Greater than 46
Burning Index	Less than 67	Between 67 and 108	Greater than 108
Ignition Component	Less than 5	Between 5 and 9	Greater than 9
100-Hour Fuel Moisture	Greater than 18%	Between 17% and 18%	Less than 17%
1000-Hour Fuel Moisture	Greater than 20%	Between 19% and 20%	Less than 19%
KBDI	Less than 192	Between 192 and 330	Greater than 330

Other factors to consider when determining fire danger: sky conditions, precipitation amount, number of days since rain, and season

Region Specific – Blue Ridge Escarpment



Weekly Outlook

Blue Ridge Escarpment FDRA - General Fire Danger Forecast

For planning purposes only; forecast is subject to change

Four or more **RED** blocks in a day signals the potential for a **Critical Fire Day**

DAY	SAT 11-Mar	SUN 12-Mar	MON 13-Mar	TUE 14-Mar	WED 15-Mar	THU 16-Mar	FRI 17-Mar
Avg. Max. Temp. (°F)	51	42	50	42	51	60	61
Avg. Min. Humidity (%)	32	79	43	36	27	32	47
Avg. 20' Wind Speed (mph)	9	5	12	15	13	7	8
Avg. Wind Direction*	WNW	ESE	WNW	NW	NW	W	WSW
Avg. Probability of Precip. (%)	59	94	14	0	1	17	37
Days Since a Wetting Rain**	5.7	0.0	1.0				
Forecast ERC (Fuel Model X)	30.6	21.1	17.6	33.4	41.9	45.9	37.0
Forecast BI (Fuel Model X)	60.7	48.2	70.0	113.1	117.5	101.4	102.1
Forecast IC (Fuel Model X)	4.9	2.5	4.3	8.8	11.3	10.9	9.7
Forecast 100-Hr. FMC	15.7	16.2	18.2	18.9	18.1	16.8	15.8
Forecast 1000-Hr. FMC	19.2	19.0	19.2	18.9	18.9	18.7	18.2
KBDI	58.3						

Data Source:

- Weather forecasts come from the National Weather Service's [Digital Forecast Database](#). The wind speed and direction, and probability of precipitation, are calculated as averages of the 1 am, 7 am, 1 pm, and 7 pm forecasts. The 20-foot wind speed is estimated from the 10-meter forecast using the log wind profile method.
- Days since a wetting rain is calculated using a combination of historical data (to determine the most recent wetting rain event) and forecasted precipitation amounts. These forecasted amounts are only available for the first three days of the forecast period.
- Fire danger forecasts for the next 7 days are issued by National Weather Service through WIMS. KBDI is only available on the first forecast day since the [NFDRS Forecast](#) product does not include precipitation amounts, which are used to adjust KBDI from day to day.

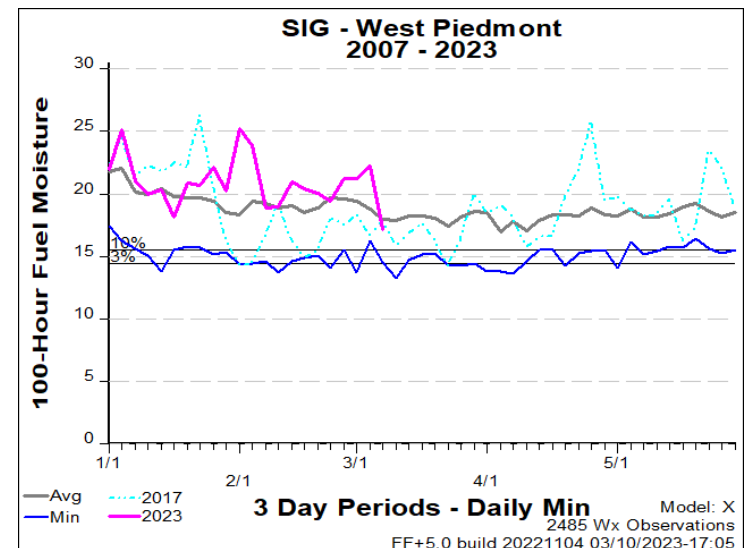
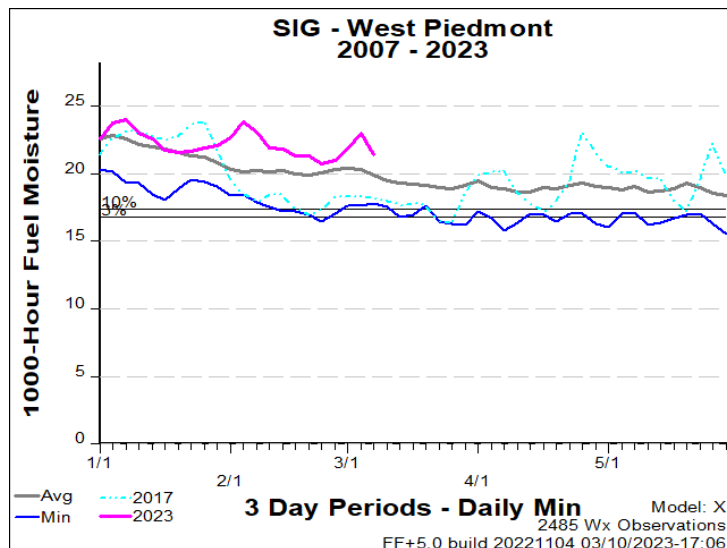
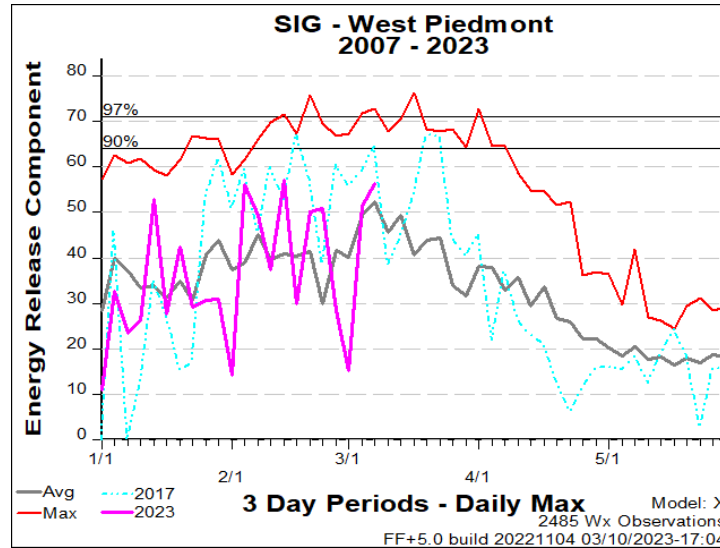
Values in the table above are averages from 3 stations in this FDRA:

- Rendezvous Mtn. (312001)
- North Cove Pinnacle (fr1) (314301)
- Rutherford County (316302)

KEY	Low to Moderate Burning Conditions	Burning Conditions Can be High CAUTION	Burning Conditions Can be Critical WATCH OUT!
Avg. Max. Temp.	Less than 40°F	Between 40°F and 50°F	Greater than 50°F
Avg. Min. Humidity	Greater than 35%	Between 30% and 35%	Less than 30%
Avg. 20' Wind Speed	Less than 2 mph	Between 2 mph and 4 mph	Greater than 4 mph
Avg. Wind Direction*	Criticality of wind direction is highly dependent on burn operations and/or structures threatened.		
Days Since a Wetting Rain**	A wetting rain is defined as 0.10" or greater. This is an average of the FDRA stations noted above.		
Energy Release Comp.	Less than 52	Between 52 and 62	Greater than 62
Burning Index	Less than 116	Between 116 and 136	Greater than 136
Ignition Component	Less than 14	Between 14 and 20	Greater than 20
100-Hour Fuel Moisture	Greater than 18%	Between 16% and 18%	Less than 16%
1000-Hour Fuel Moisture	Greater than 19%	Between 18% and 19%	Less than 18%
KBDI	Less than 351	Between 351 and 508	Greater than 508

Other factors to consider when determining fire danger: sky conditions, precipitation amount, number of days since rain, and season

Region Specific – Western Piedmont



Weekly Outlook

Western Piedmont FDRA - General Fire Danger Forecast

For planning purposes only; forecast is subject to change

Four or more **RED** blocks in a day signals the potential for a **Critical Fire Day**

DAY	SAT 11-Mar	SUN 12-Mar	MON 13-Mar	TUE 14-Mar	WED 15-Mar	THU 16-Mar	FRI 17-Mar
Avg. Max. Temp. (°F)	57	46	59	50	55	64	67
Avg. Min. Humidity (%)	28	77	39	28	25	29	43
Avg. 20' Wind Speed (mph)	9	6	11	15	12	7	11
Avg. Wind Direction*	WNW	E	WSW	WNW	NW	W	SW
Avg. Probability of Precip. (%)	29	91	12	0	0	11	25
Days Since a Wetting Rain**	1.0	0.0	1.0				
Forecast ERC (Fuel Model X)	29.1	26.9	10.6	38.9	46.6	51.5	42.1
Forecast BI (Fuel Model X)	92.9	65.5	48.3	146.8	144.4	114.9	128.0
Forecast IC (Fuel Model X)	5.4	3.6	2.8	10.5	12.3	10.0	10.2
Forecast 100-Hr. FMC	18.2	18.6	19.7	20.6	20.5	19.3	18.1
Forecast 1000-Hr. FMC	23.6	23.5	23.6	23.4	23.3	23.2	23.2
KBDI	70.0						

Data Source:

- Weather forecasts come from the National Weather Service's [Digital Forecast Database](#). The wind speed and direction, and probability of precipitation, are calculated as averages of the 1 am, 7 am, 1 pm, and 7 pm forecasts. The 20-foot wind speed is estimated from the 10-meter forecast using the log wind profile method.
- Days since a wetting rain is calculated using a combination of historical data (to determine the most recent wetting rain event) and forecasted precipitation amounts. These forecasted amounts are only available for the first three days of the forecast period.
- Fire danger forecasts for the next 7 days are issued by National Weather Service through WIMS. KBDI is only available on the first forecast day since the [NFDRS Forecast](#) product does not include precipitation amounts, which are used to adjust KBDI from day to day

Values in the table above are averages from 3 stations in this FDRA:

- Duke Forest (312501)
- Lexington (314602)
- Mt. Island Lake (316602)

KEY	Low to Moderate Burning Conditions	Burning Conditions Can be High CAUTION	Burning Conditions Can be Critical WATCH OUT!
Avg. Max. Temp.	Less than 40°F	Between 40°F and 50°F	Greater than 50°F
Avg. Min. Humidity	Greater than 35%	Between 30% and 35%	Less than 30%
Avg. 20' Wind Speed	Less than 2 mph	Between 2 mph and 4 mph	Greater than 4 mph
Avg. Wind Direction*	Criticality of wind direction is highly dependent on burn operations and/or structures threatened.		
Days Since a Wetting Rain**	A wetting rain is defined as 0.10" or greater. This is an average of the FDRA stations noted above.		
Energy Release Comp.	Less than 40	Between 40 and 52	Greater than 52
Burning Index	Less than 95	Between 95 and 120	Greater than 120
Ignition Component	Less than 9	Between 9 and 14	Greater than 14
100-Hour Fuel Moisture	Greater than 18%	Between 17% and 18%	Less than 17%
1000-Hour Fuel Moisture	Greater than 19%	Between 18% and 19%	Less than 18%
KBDI	Less than 344	Between 344 and 479	Greater than 479
Other factors to consider when determining fire danger: sky conditions, precipitation amount, number of days since rain, and season			

Outlook Summary Table – R3

Summary Table by FDRA using count of colored blocks in a day’s forecast.

Forecast Subject to Change

Key: 4+ Red Blocks on a Day = “Critical” Day Potential; Red Color
 4+ Yellow or Combo of Yellow/Red = “High” Day Potential; Yellow Color
 6+ Blue-Green Blocks = “Low to Mod” Potential Day; Blue-green Color

Date	Day of Week	FDRA Matrix Summary - NCFS Region 3				
		Southern Highlands	Central Mountains	Northern Highlands	Blue Ridge Escarp	Western Piedmont
11-Mar	Sat	Low/Mod	High	High	High	Low/Mod
12-Mar	Sun	Low/Mod	Low/Mod	Low/Mod	High	Low/Mod
13-Mar	Mon	Low/Mod	Low/Mod	Low/Mod	Low/Mod	Low/Mod
14-Mar	Tues	Low/Mod	Low/Mod	Low/Mod	Low/Mod	High
15-Mar	Weds	High	High	High	High	Critical
16-Mar	Thurs	Low/Mod	High	High	High	High
17-Mar	Fri	Low/Mod	High	High	High	High

Weather Outlook Discussion

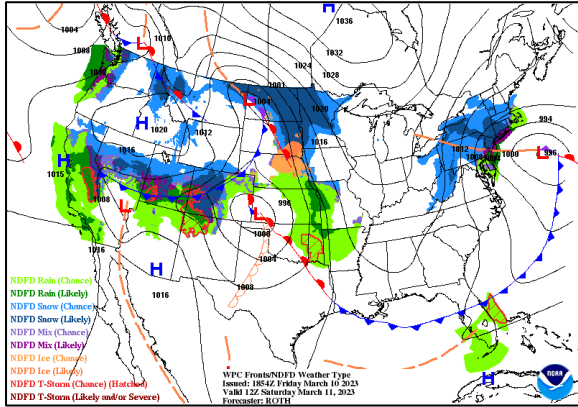
GSP NWS:

.DISCUSSION...

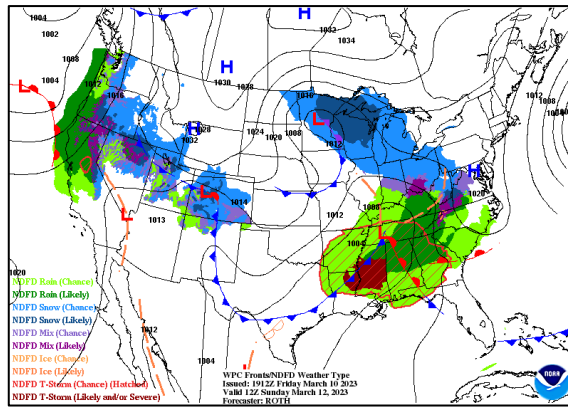
Dry and cool high pressure will build into the region from the northwest tonight and Saturday. A stronger low pressure system will approach the region from the west Saturday night and move through Sunday into Sunday night, bringing moisture back into the area for the latter half of the weekend. Colder air will arrive from the northwest on Monday and persist through the middle of the week.

WPC Forecasted Surface Fronts & Sea-Level Pressures

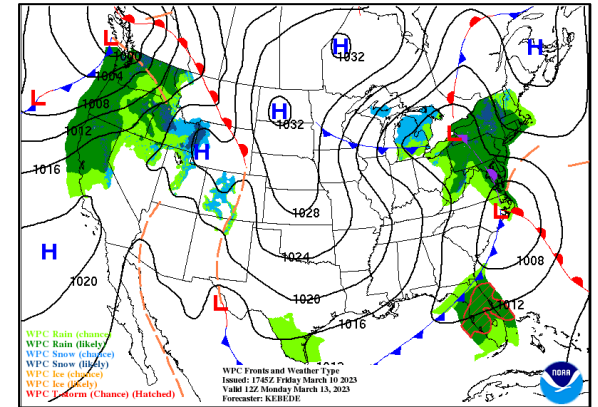
Saturday - 700 am



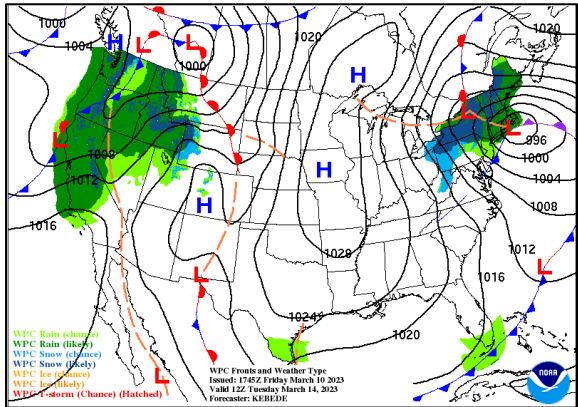
Sunday - 700 am



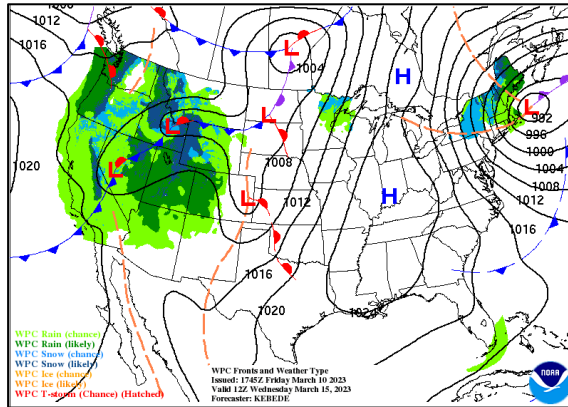
Monday - 700 am



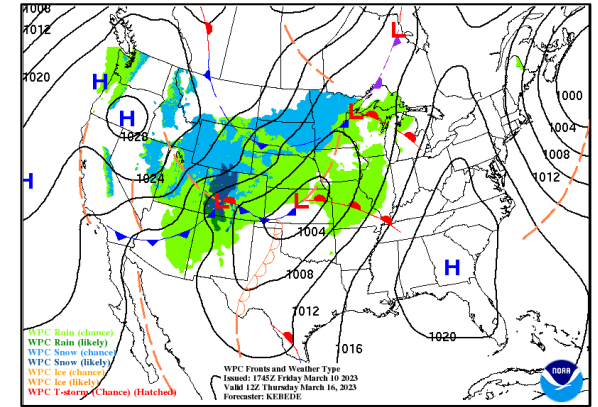
Tuesday - 700 am



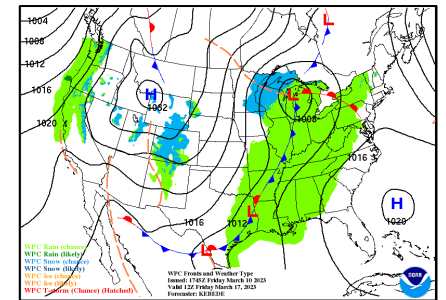
Wednesday - 700 am



Thursday - 700 am

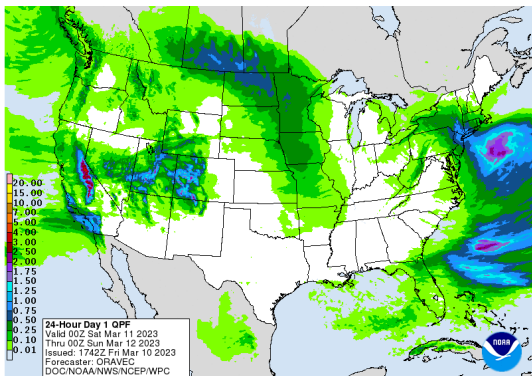


Friday - 700 am

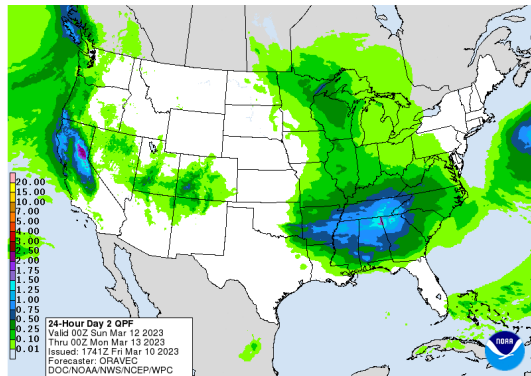


Quantitative Precipitation Forecast, 7-Day

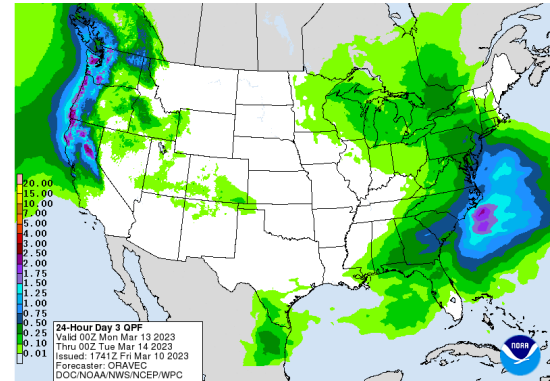
Day - 1



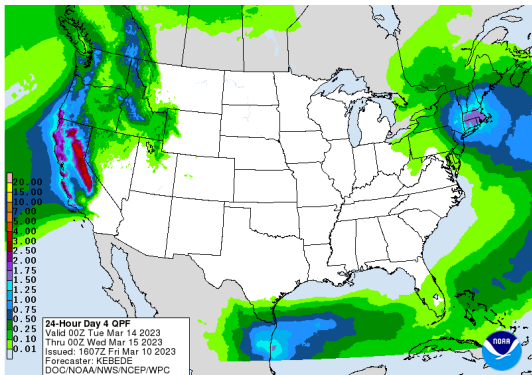
Day - 2



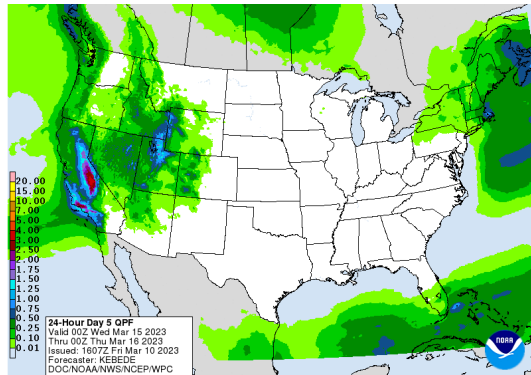
Day - 3



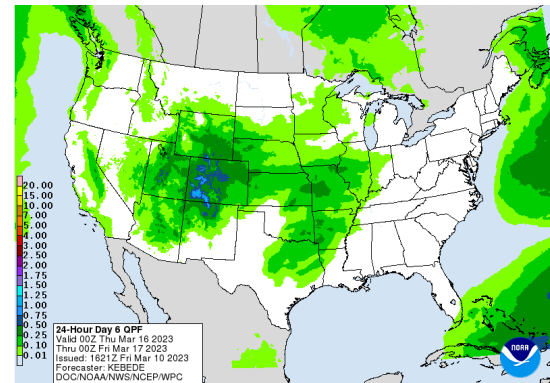
Day - 4



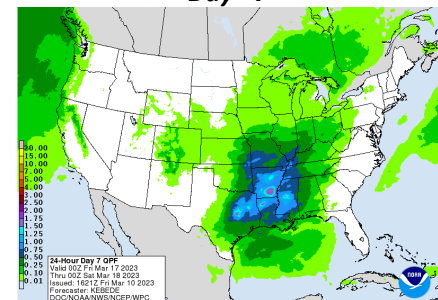
Day - 5



Day - 6

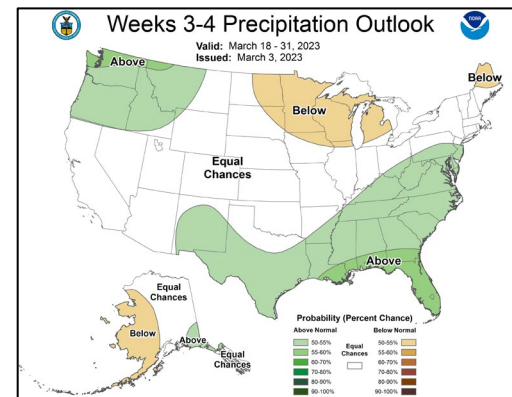
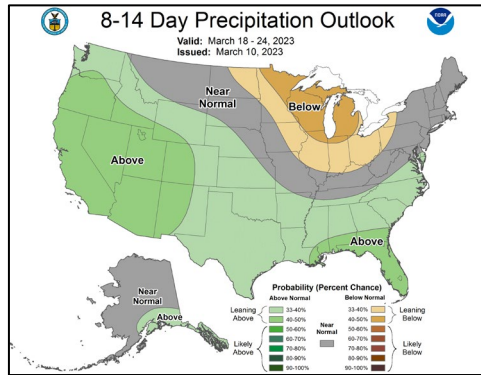
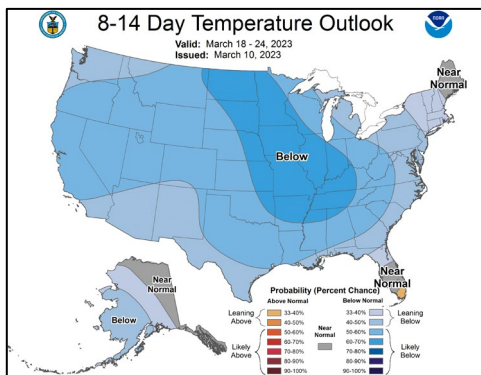
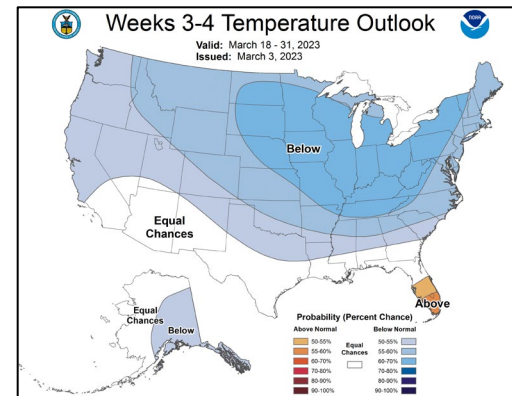
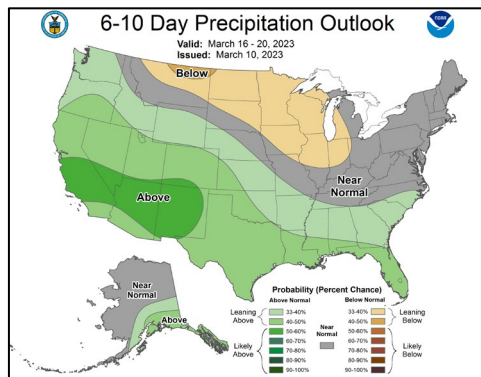
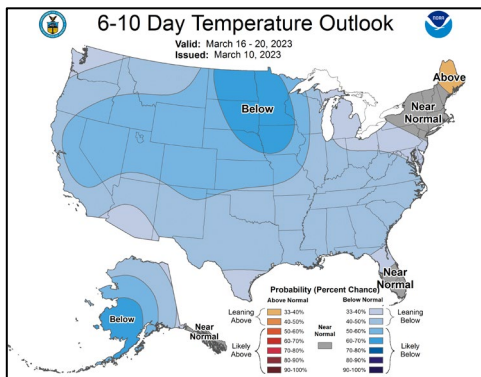


Day - 7



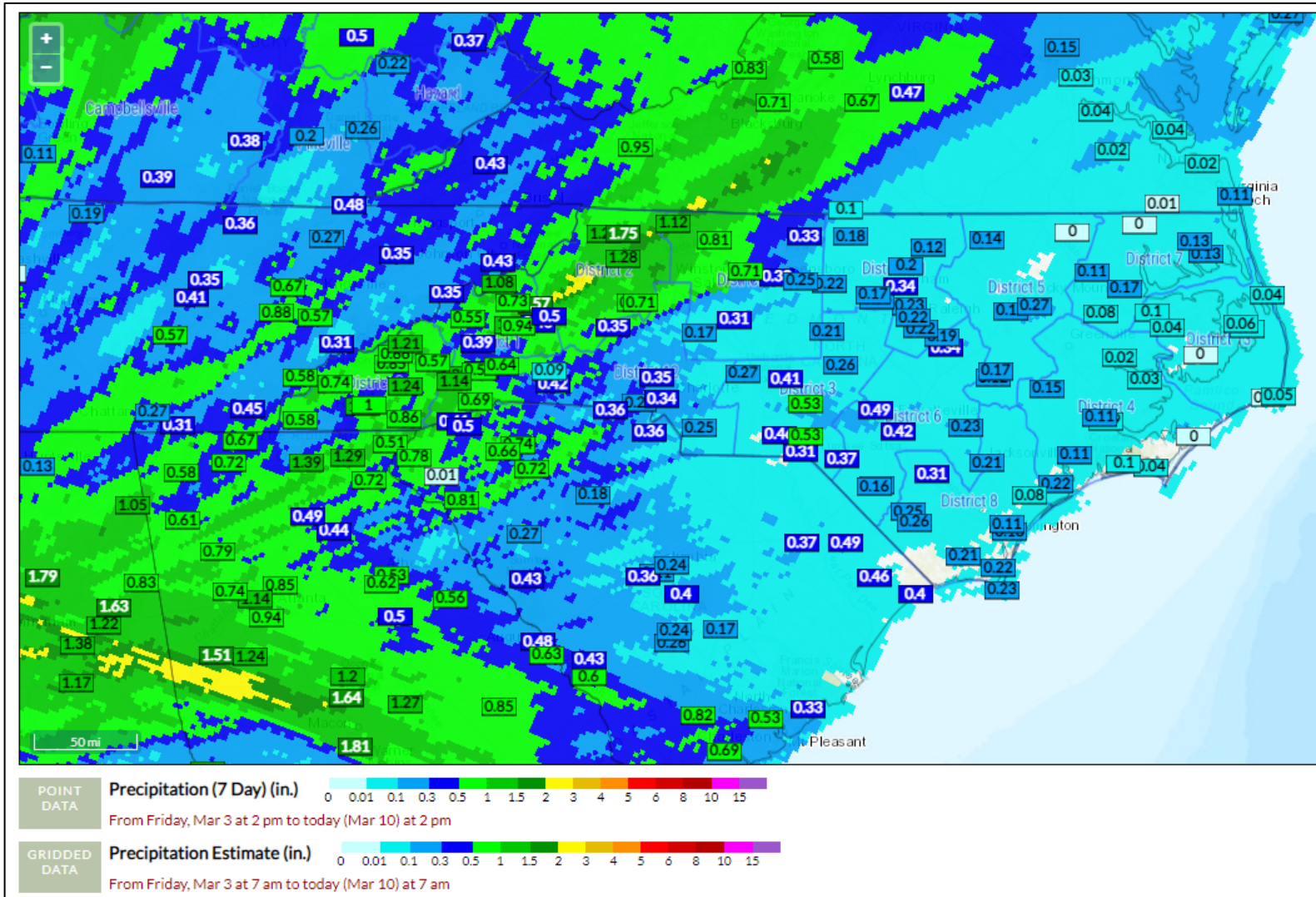
Temp & Precip Outlook

6-10 Day, 8-14 Day & Week 3-4



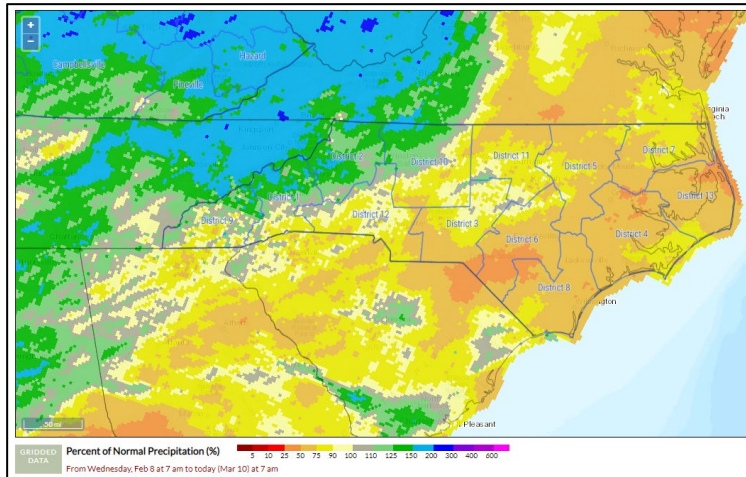
7 Day Precipitation Totals

FWIP (Point accumulation ending at 1400 on 3/10, Grid ending 0700 3/10)

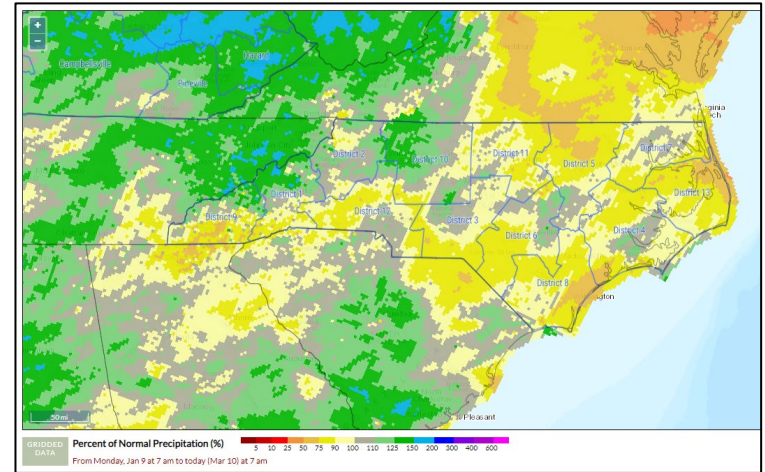


Percent of Normal Precip, FWIP (Ending 0700 3/10)

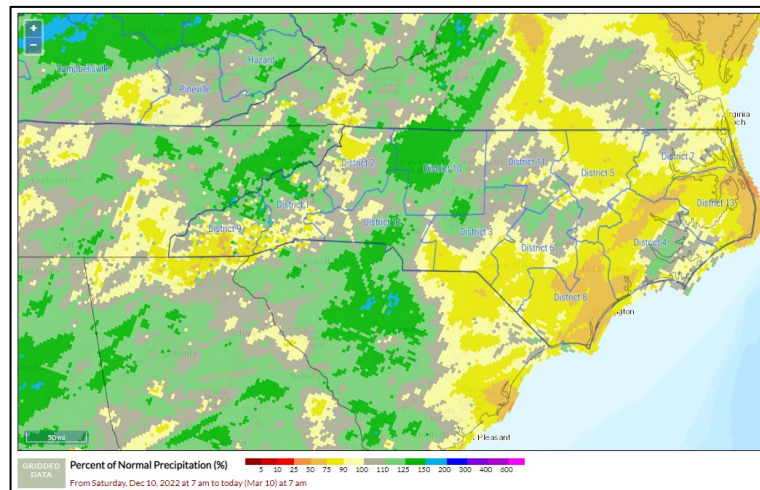
30-Day % of Normal



60-Day % of Normal

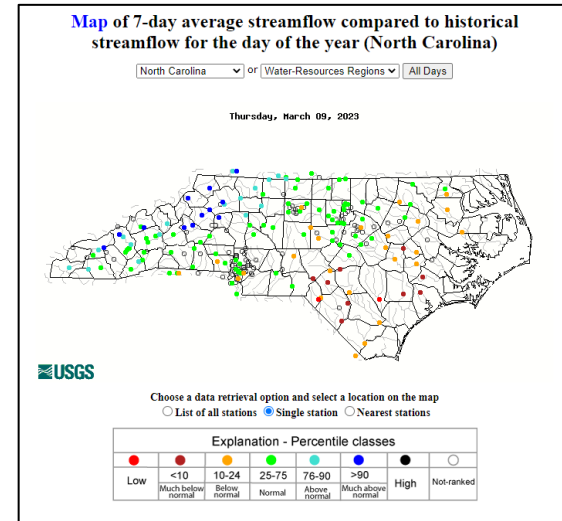
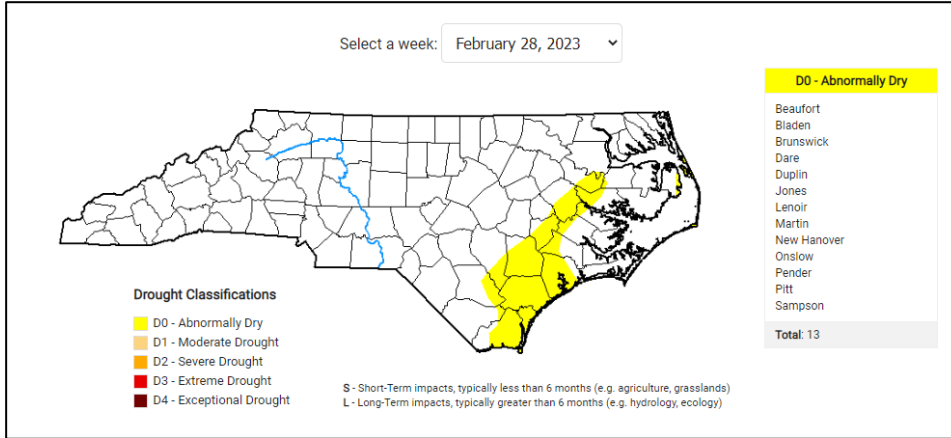


90-Day % of Normal

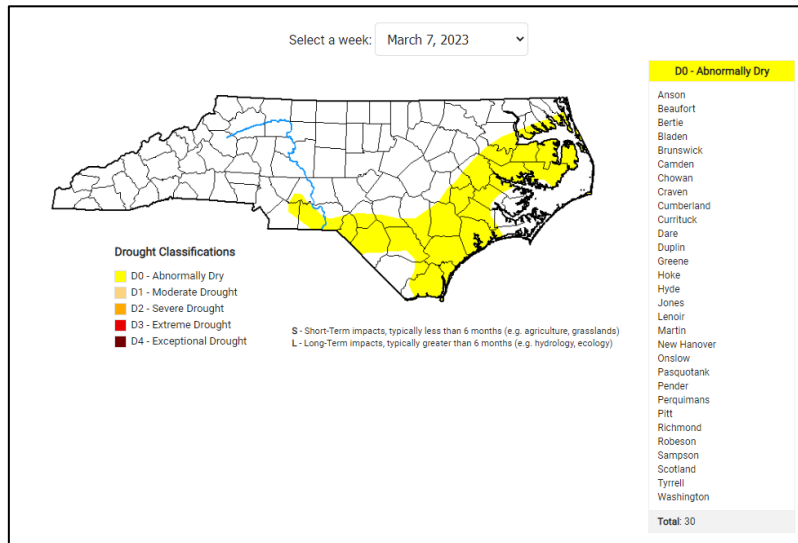


Drought Situation

Previous Week:



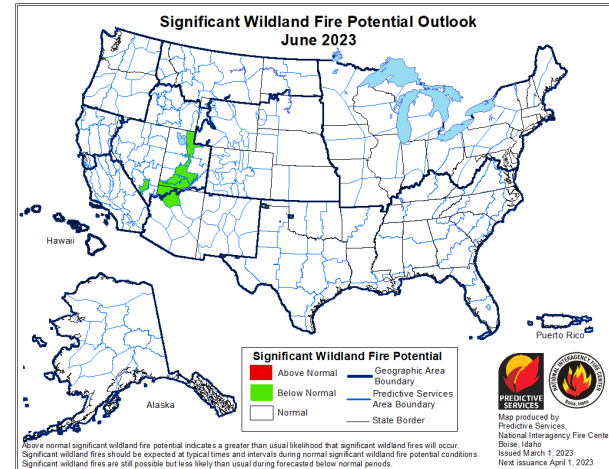
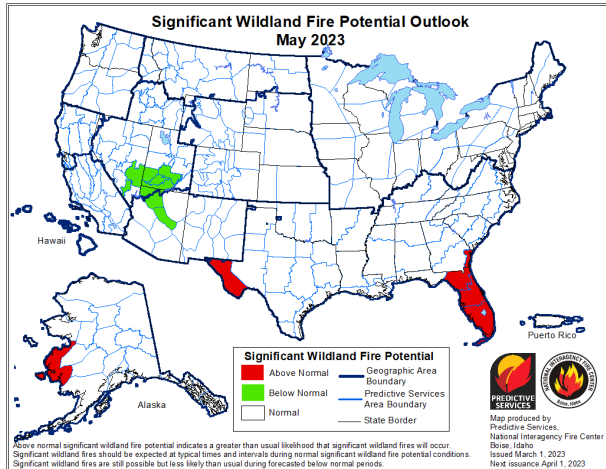
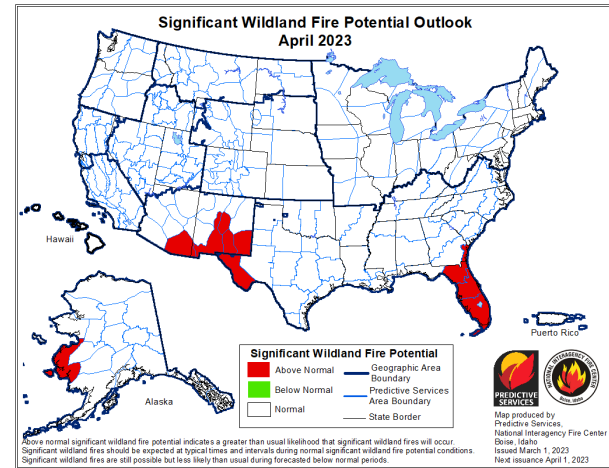
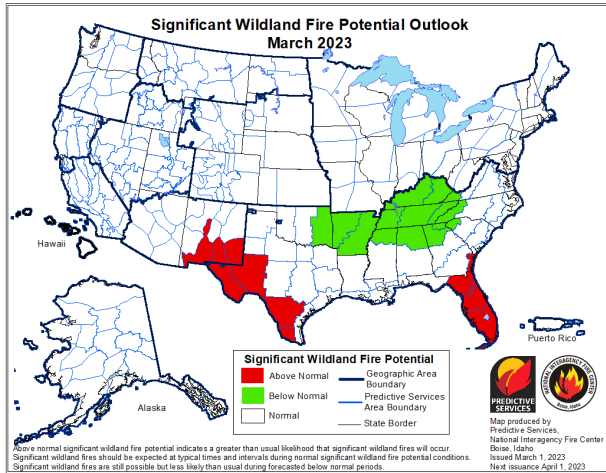
Current Week:



- D-0 Drought Expansion from last week
- 7-Day Stream flow averages also decreasing East

Significant Wildland Fire Potential Outlook:

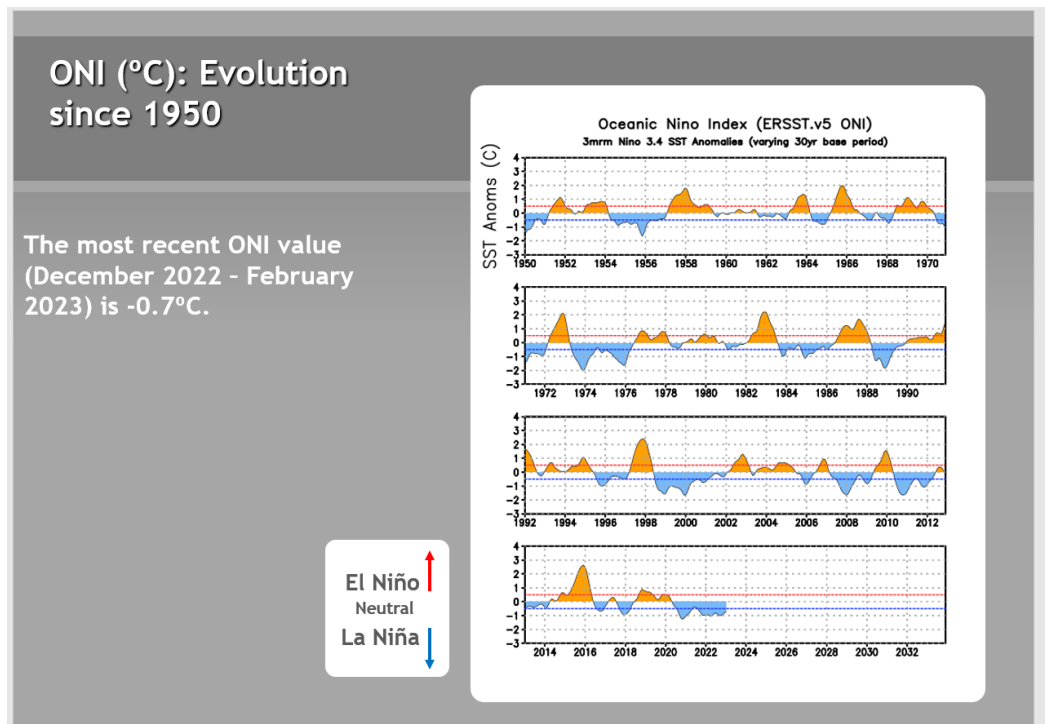
Updated 3/1/23



A significant fire is one that requires resources from outside the district (other than aviation). IA potential is based more on shorter term weather factors. Just a few days of dry weather can increase IA activity considerably as we have already seen this year.

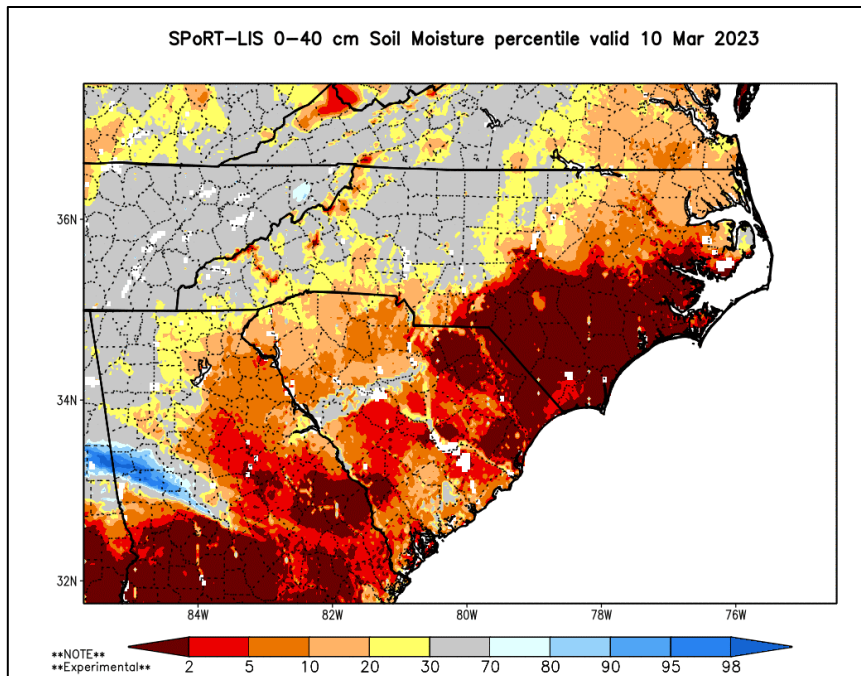
ENSO Note

- 3/9/23 Update - La Nina has officially ended.
- ENSO-Neutral conditions expected to continue through spring and early summer of 2023. Signs point to El Nino development in late summer.



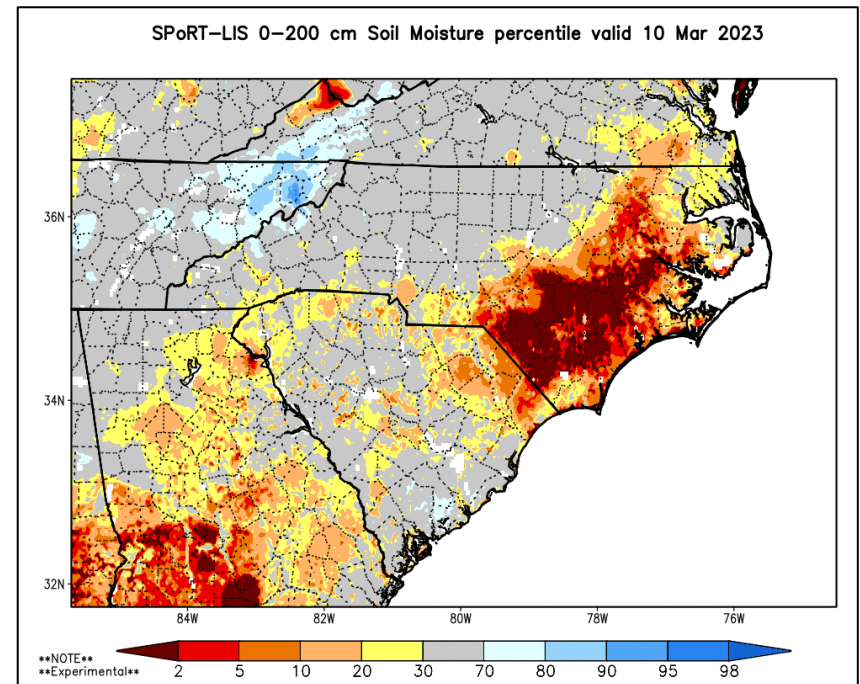
SPoRT Relative Soil Dryness

0-40 cm Depth

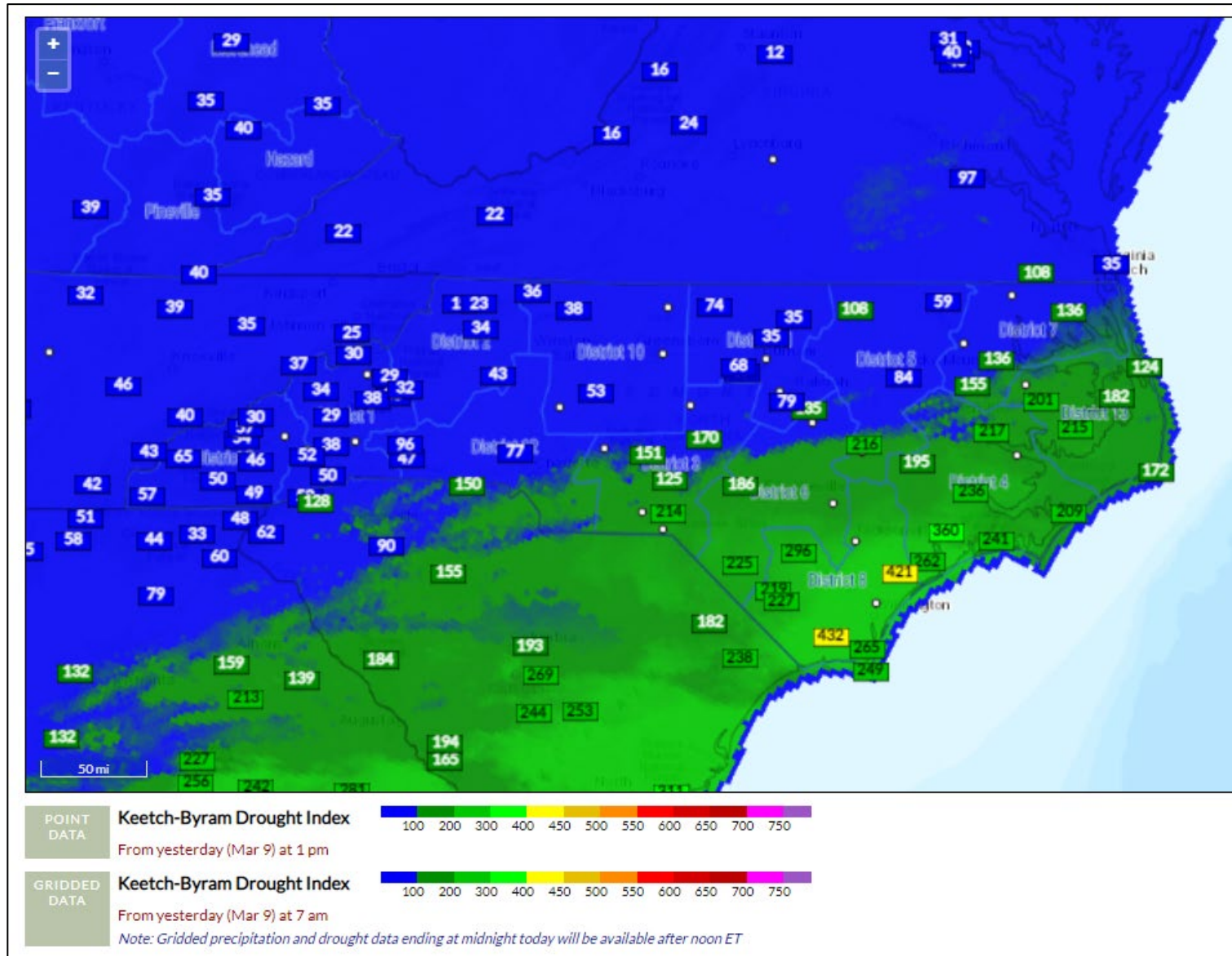


- Modeled Drying Trend Continues 0-2 Meter Depth, especially to the East & South

0-200 cm Depth

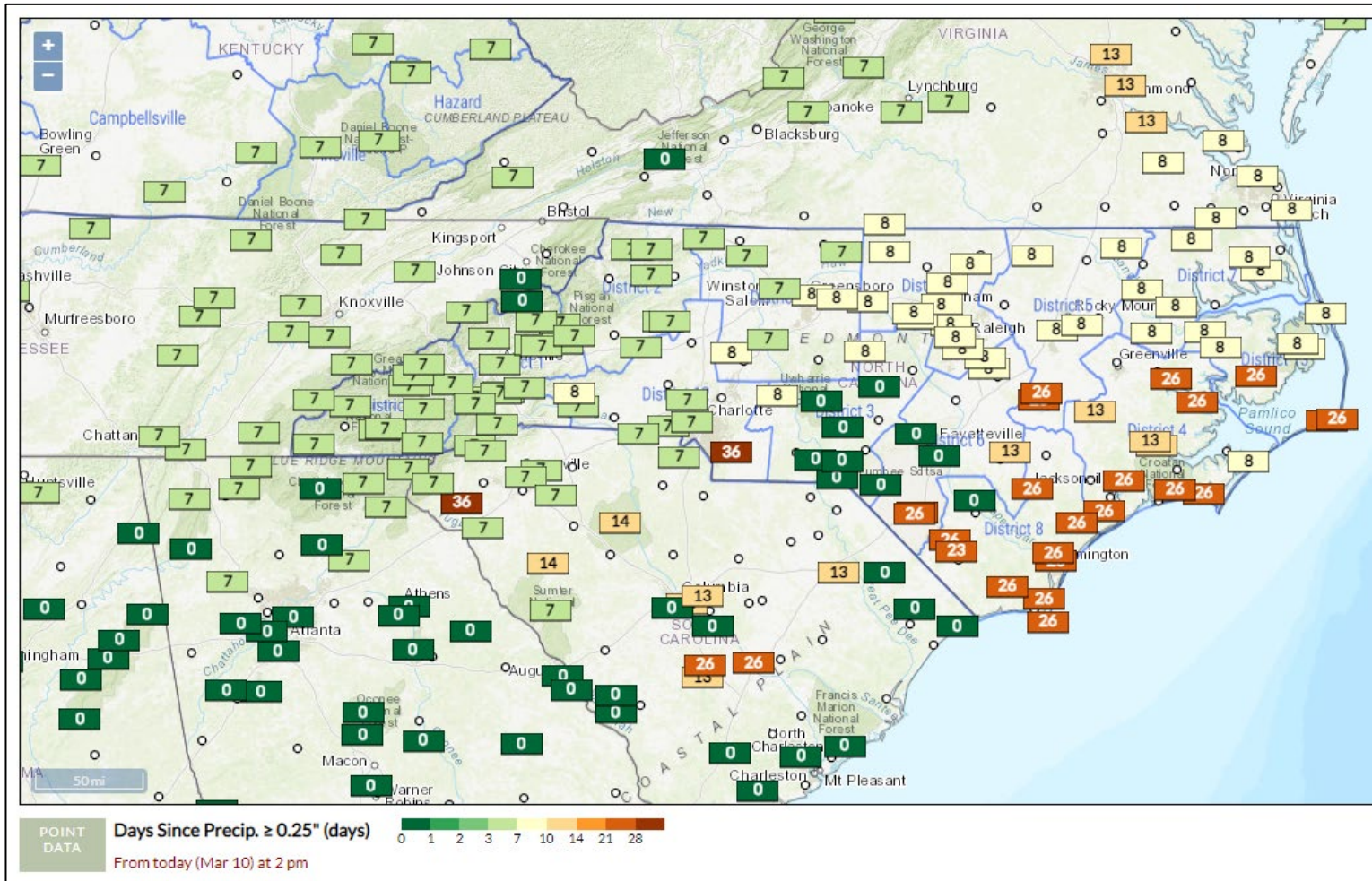


KBDI - Gridded & Station Points (FWIP)



Days Since Daily Precip $\geq 0.25''$

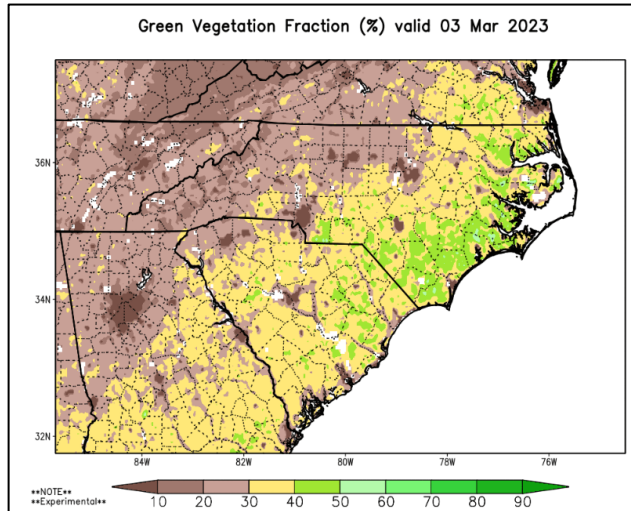
Note – Latest product run was on 3/10/23 at 1400.
Does not consider rainfall after that point.



Green Fraction & Green-Up Anomaly

- Generally, 2-3 Weeks Ahead of 30-Yr Avg
- Frost/Freeze Concerns

Last Week



Current

