

Bald Cypress

(*Taxodium distichum* var *distichum*)

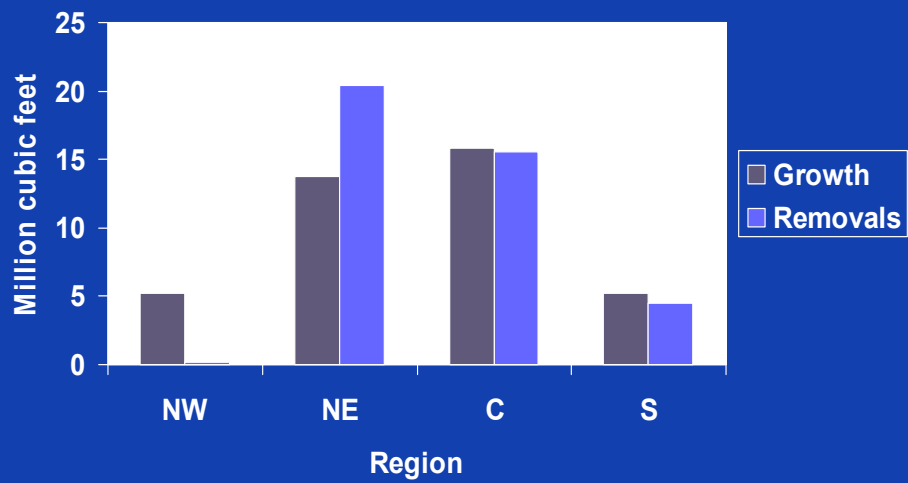


Pond Cypress

Taxodium distichum var *nutans*(noding)



Annual growth versus removals for Florida's cypress, 1987-1994



Source: USDA Forest Service Statistics

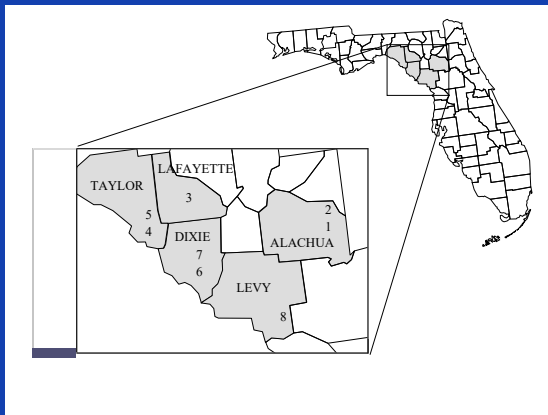
Florida Cypress Task Force



Research
Management
Training

Began the Cypress Initiative

Contracted with UF
and identified 8
study sites

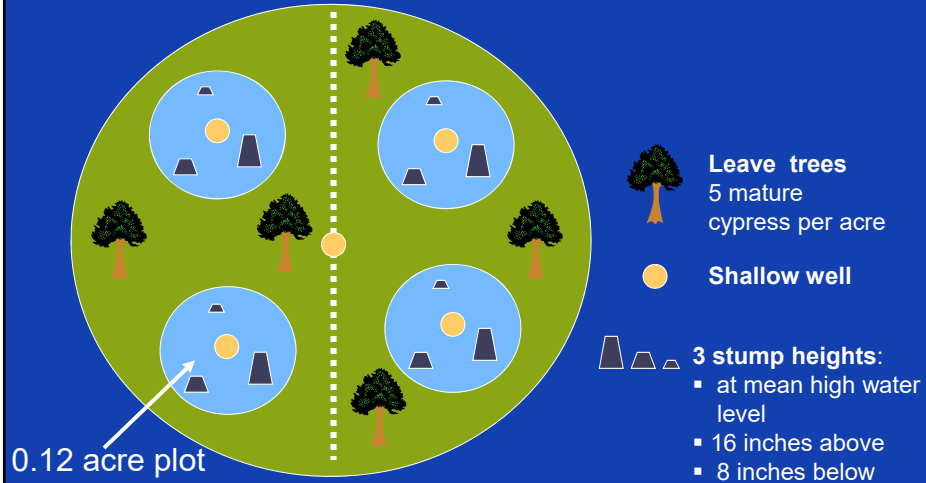


Site	Area (acre)
AC	2.5
RAY	2.2
IP	2.7
F1	5.2
F2	2.0
PCA 1	2.5
PCA 2	5.2
G	3.0

Harvesting: Treatment and plot layout at each of the 8 sites

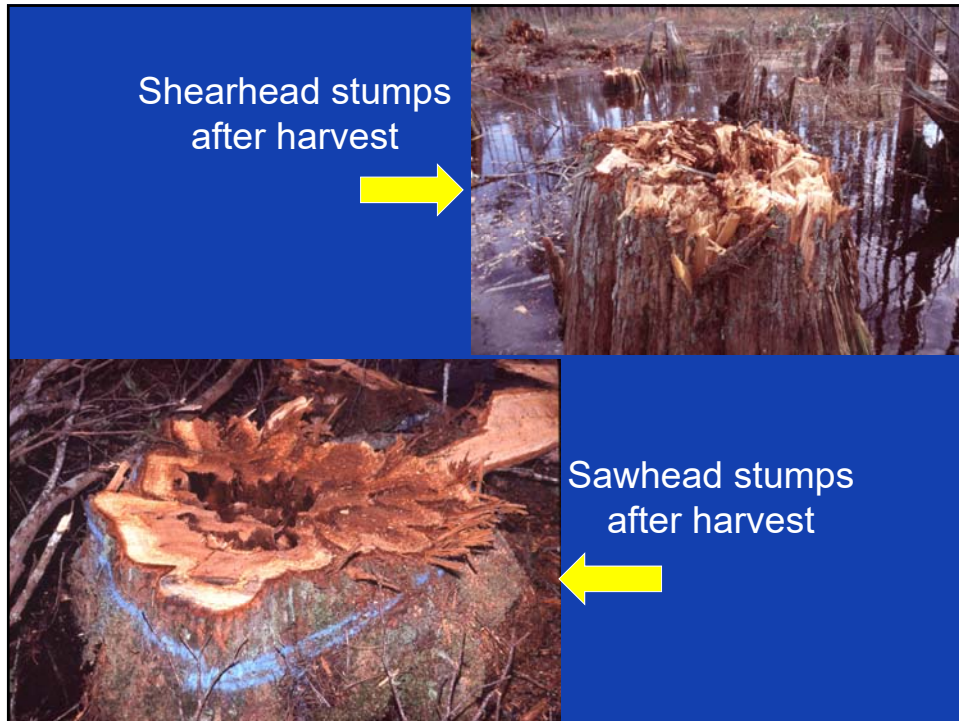
Shearhead

Sawhead



Stump damage by equipment



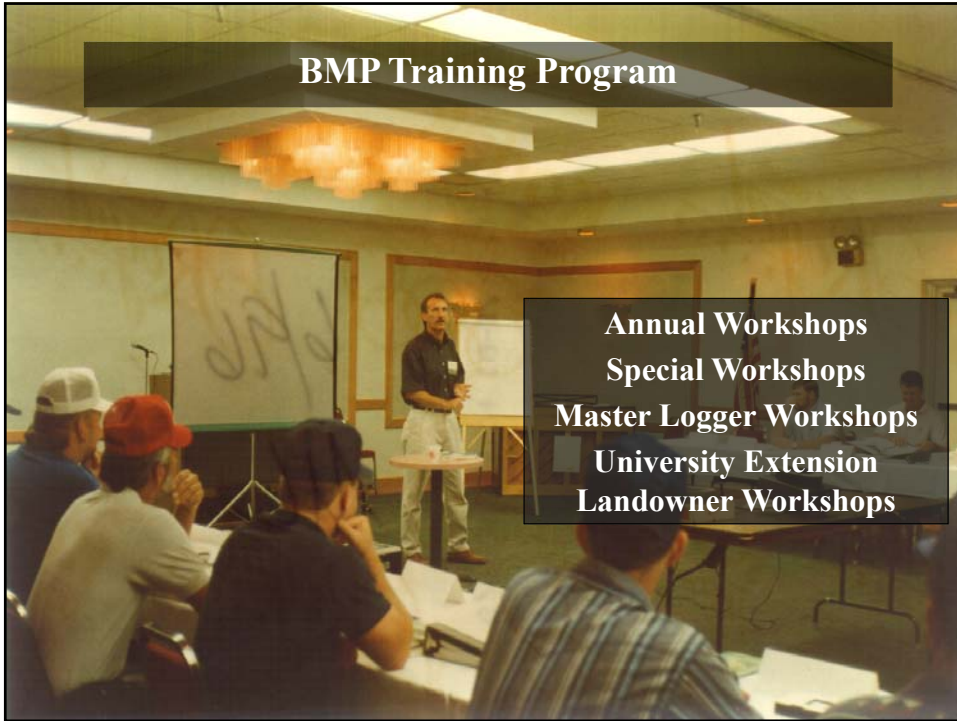


BMP Recommendations Pondcypress Wetlands

- Cut trees at (or above) the high water mark
 - This insures that if a wet winter occurs, the stump sprouts will be above the water
- Where cypress trees dominate the stand, leave 5 cypress trees per acre
 - This will insure that natural seedlings occur



BMP Training Program



Annual Workshops
Special Workshops
Master Logger Workshops
University Extension
Landowner Workshops

Florida Cypress Task Force and Cypress Initiative



Research
Management
Training