

# Year in Review 2013



## Success Stories & Accomplishments

### North Carolina Forest Service, Nonpoint Source & Water Quality programs

## BMP Implementation Assessments on Logging Sites

- Started the third cycle of recurring, periodic statewide site assessments.
- Evaluating the use of Forestry BMPs (Best Management Practices) for protecting water quality and conserving soil.
- Logging sites in 55 counties have been assessed so far.
- Goal is to assess more than 200 sites.
- Using new hand-held tablet computers and a customized database to expedite data gathering, analysis, and reporting.
- An effort in continuous improvement of the BMP assistance that we provide.



## Reaching Out to the Customer



- Newly-developed “BMP Newsletter Update”.
- Produced each quarter for each of the three major eco-regions .
- Highlights notable BMP hot topics, with recommendations.
- Includes upcoming scheduled training events.
- Summarizes water resource projects managed by the N.C. Forest Service.
- Available exclusively online from our website.



Website: [ncforestservice.gov](http://ncforestservice.gov)



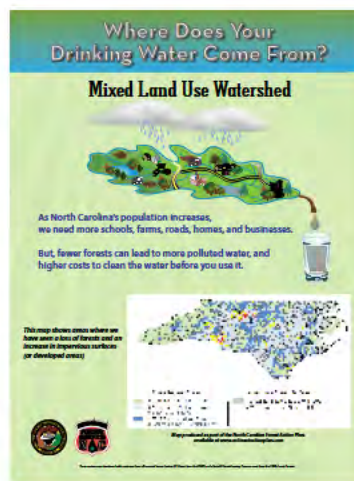
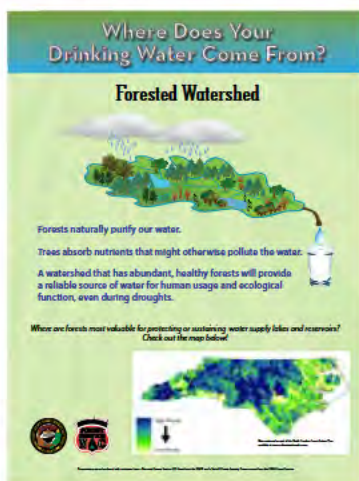


# Education, Outreach & Training



- Assisted with the annual Environmental Education Day for Greene County Schools, reaching 235 fifth grade students (photo at left).
- Instructed 30 forestry college students on harvest planning, stream crossings, and BMPs.
- Trained 89 loggers through the N.C. ProLogger Program.

- Exhibited at the Mid-Atlantic Logging & Biomass Equipment Expo, with more than 3,000 attendees.
- Presented and exhibited at the N.C. Water Resources Research Institute's Annual Conference, and the Southern Regional Extension Water Education Summit.
- Coordinated hands-on training for our Water Quality Foresters and affiliated personnel on installation of erosion & sediment control devices, provided by the NCSU Soil Science Department.
- Produced three new outreach posters for our seven Educational State Forests and our personnel in each District (posters shown below). The posters highlight the linkage between forests, watersheds, and drinking water.



# Compliance Inspections

NOTE: These figures are from state fiscal year 2012-2013.

4,066: Number of forestry sites inspected for compliance with the statewide rules known as Forest Practices Guidelines Related to Water Quality (abbreviated as FPGs; rule code NCAC 15A NCAC 011 .0100-.0209.)

2,649: Number of re-inspections statewide.

97%: Statewide FPG compliance rate.

115: Number of inspected sites which were not in compliance upon initial inspection.

4: Number of cases that were referred to an environmental enforcement agency.

102: Sites that were inspected as a result of receiving a complaint.

19: Number of complaint sites that were not-in-compliance upon inspection.



# Bridgemats

## Emergency Response

Western North Carolina received excessive rainfall during the spring and summer of 2013, causing flash floods.

NCFS bridgemats were installed at multiple locations in July, including Madison County (photo at right), to provide homeowners access to their property after floods washed out their driveways and roads.

## Accomplishment Metrics

During the last fiscal year, NCFS bridgemats were used on 56 logging jobs to protect 60 stream or ditch crossings, and provided access to more than 2,300 acres of timber harvest.



## Technology Transfer

We provided technical specifications, photos, drawings, and vendor information to the Arkansas Forestry Commission upon their request, so that they can purchase bridgemats and start-up their own program for loggers.

## Technical Assistance & Customer Service

### Some examples of assistance that we provided:

- Examined extensive road construction in a large wetland forest in Robeson County.
- Hosted a tour of recently harvested wetland forests, upon request from a forest products company.
- Made site visits and provided recommendations for stream crossing, hiking trail, and road improvements on multiple North Carolina State Parks, at the request of their environmental services staff.
- Conducted a site visit on a large tract in Rutherford County to assess BMP work for stabilizing old logging roads and removing old stream crossings.
- Evaluated sedimentation from an old logging road in Graham County upon request from a homeowner.
- Responded to concerns of water backing up on a logging road in Currituck County (photo at right).





# Forest Watershed Studies

## Aquatic Habitat Restoration

In a partnership with the N.C. Division of Water Resources, we hosted an examination of aquatic life in a restored segment of Purlear Creek at Rendezvous Mountain Educational State Forest in Wilkes County.

*Biologists examine their samples taken from the stream, looking for aquatic insects*



Orange County, NC. This is one of several stream monitoring structures we installed across central North Carolina with cooperation from landowners.

## Evaluating Forest Road Stream Crossings

We continued monitoring streams to study the effects of sediment runoff that may come from a forest road when it crosses a stream.

The intent is to demonstrate that when BMPs (Best Management Practices) are used, there should be no significant, long lasting impacts to the water quality. These studies are part of a larger 6-year forestry BMP watershed study project that will conclude next year.

# Stream Restoration



**BEFORE**  
February 2013



**AFTER**  
July 2013

Minor repair warranty work was completed by the stream restoration contractor along the Lake Julia Outfall (Reasonover Creek) at DuPont State Recreational Forest. This segment was initially restored in May 2011. Due to excessive rainfall in the last couple of years, a short section had washed out.

## Partners and Cooperators



Duke Forest



The North Carolina Forest Service is an equal opportunity / affirmative action employer. Its programs, activities and employment practices are available to all people regardless of race, color, religion, sex, age, national origin, handicap or political affiliation. 500 copies of this public document were printed at a cost of \$197.60 or \$0.39 each. WQ-01-13.